



ELECTRA Dual

Recessed 3 W LED Luminaire

Order Code : 3249512
Product Code : ELC 003Y 30CM00 25 LLL 67 DUAL V.2 FLP



Product Data

Standard Features

Housing	: Die Cast Aluminium
Diffuser	: Clear Acrylic
Screws	: 316L Stainless Steel
IP Grade	: IP67
Impact Resistance	: IK09
Light Source	Power Led

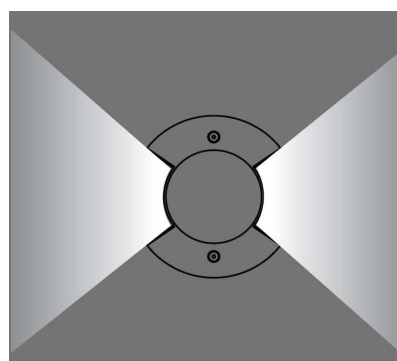
Optical & Electrical Features

Power Consumption	: 3.4 W
Final Luminous Flux	: 165.2 lm
Efficacy	: 47.4 lm/W
Input Voltage	: 220-240 V AC
Frequency	: 50-60 Hz
Power Factor	: > 0,9
Correlated Color Temperature	: 3000K
Color Rendering Index	: >70

* There is \pm 10% Tolerance in Technical Values.

Other Features & Conditions

Operating Temperature Range	: -5°C / +45°C
Impact Resistance	: IK09
Led Life Time - L70	: > 50.000 hours @Ta= 45°C



Optional Features

Correlated Color Temperatures	: 4000K / 6500K
-------------------------------	-----------------

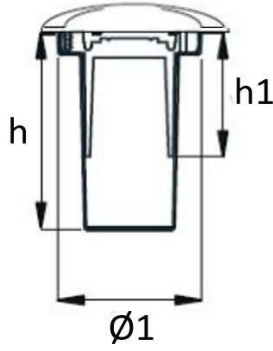
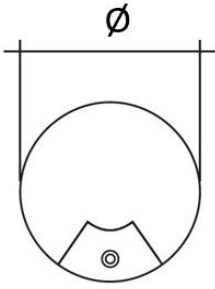
ELECTRA Dual

Recessed 3 W LED Luminaire

3249512 ELC 003Y 30CM00 25 LLL 67 DUAL V.2 FLP

Uzunluk Ölçüleri (mm)

	\emptyset	h	$\emptyset 1$	h1
Standart	80	100	70	63



Aluminium
recessing tube

- EAE, reserves the right to make changes without prior notice.



EAE Aydınlatma A.Ş.
İkitelli Organize Sanayi Bölgesi Eski Turgut Özal Caddesi No:20 Başakşehir / İSTANBUL-TURKEY
Phone: +90 212 413 21 00 (pbx) Fax: +90 212 549 37 90
www.eaeaydinlatma.com.tr

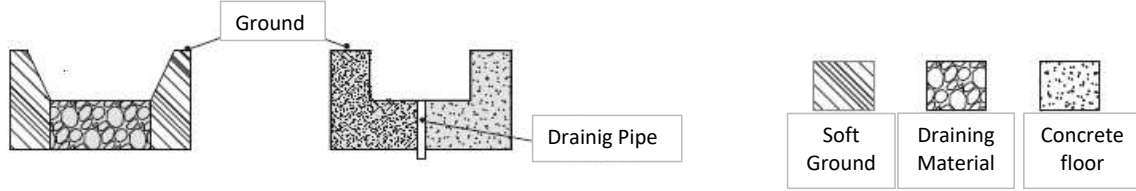
Revision date: 08.10.2020

PRACTICAL GUIDE FOR DRAINING

In areas where buried fixtures will be used, it is necessary to prevent the fixtures from contacting water for a long time.

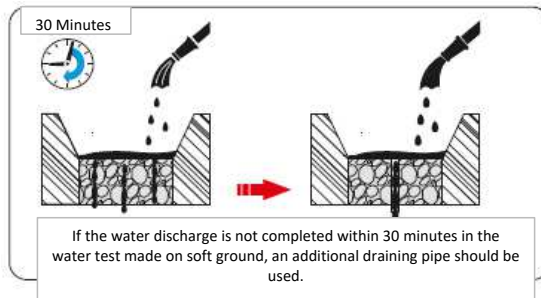
For this reason, it is important to discharge the water from the ground to be used and to drain it.

In order to determine the appropriate draining system, the structure of the ground where the fixtures will be installed is very important. Fixtures should be appropriately installed using different methods according to the ground structure.

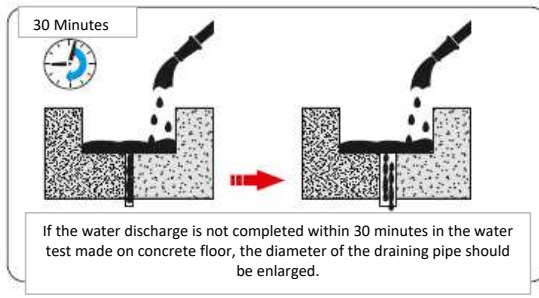


For soft grounds formed with soil, the water-holding capacity of the soil should be first measured to perform the draining. For installation into soft ground, first of all, suitable draining material should be used. Then, water should be filled into the space where fixtures will be installed. If the water is draining in more than 30 minutes, an additional draining system (pipe) must be added. On hard grounds such as concrete, a draining pipe must be used for drainage.

IMPLEMENTATION IN SOFT GROUND

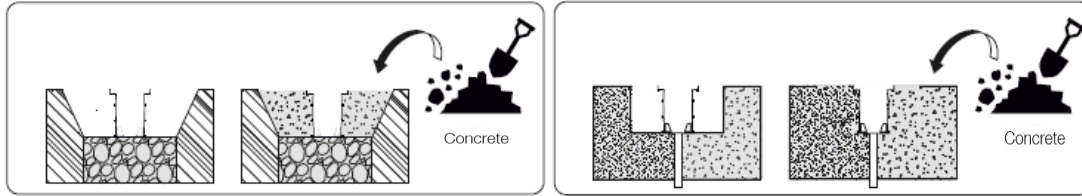


IMPLEMENTATION IN HARD GROUND

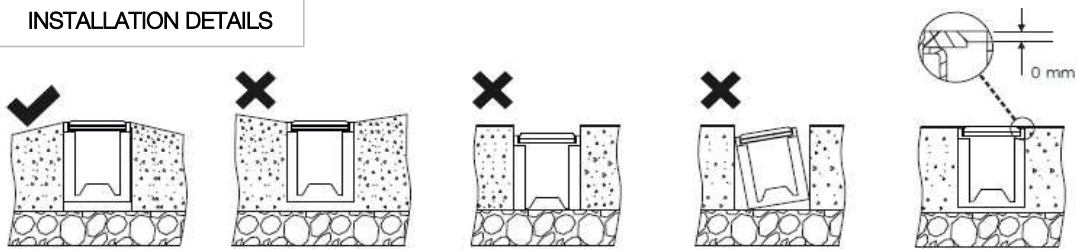


MECHANICAL STRENGTH

Also, it is recommended to construct the necessary support systems to achieve the mechanical strength values (e.g. 500 kg, 1000 kg) in the operating instructions of the fixtures on soft floors. For this purpose, it is necessary to increase the mechanical strength by pouring concrete on the sides of the fixtures.



INSTALLATION DETAILS



- EAE, reserves the right to make changes without prior notice.



EAE Aydınlatma A.Ş.
İkitelli Organize Sanayi Bölgesi Eski Turgut Özal Caddesi No:20 Başakşehir / İSTANBUL-TURKEY
Phone: +90 212 413 21 00 (pbx) Fax: +90 212 549 37 90
www.eaeaydinlatma.com.tr

Revision date: 08.10.2020