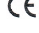
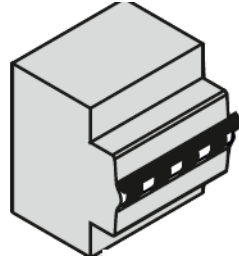


APLİKLED INSTALLATION GUIDE  Voltaj / voltage: 220 – 240 VAC Frekans/Frequency 50-60 HZ

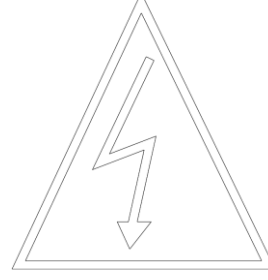


Bu armatür ilgili standartlara uygun dizayn edilmiş ve üretilmiştir. Montajı yalnızca, teknik personeller tarafından talimatlara uygun yapılmalıdır. This luminaire has been designed and manufactured according to relevant standards. For luminaires with non-user replaceable light sources, the light sources must be replaced by the manufacturer, his service agent or other similarly qualified people.

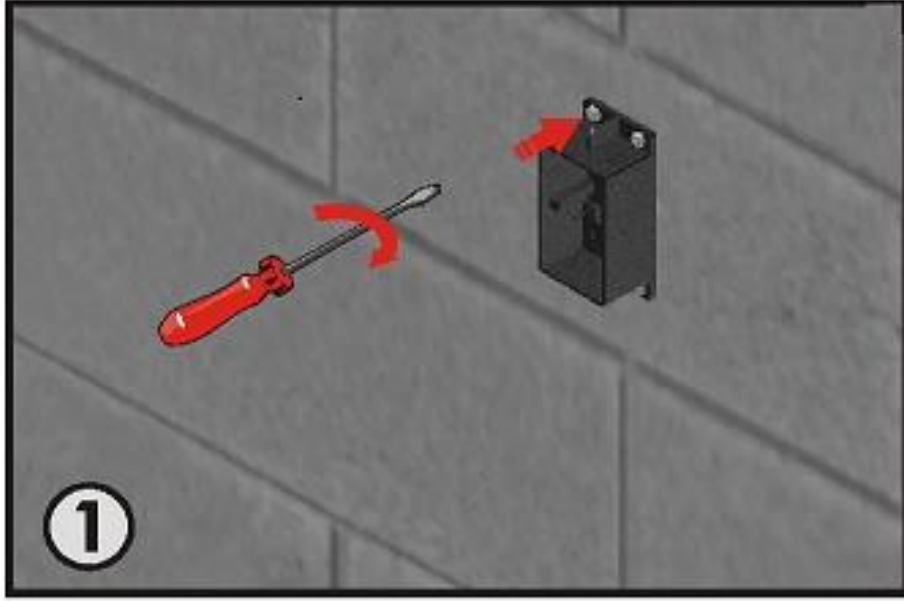
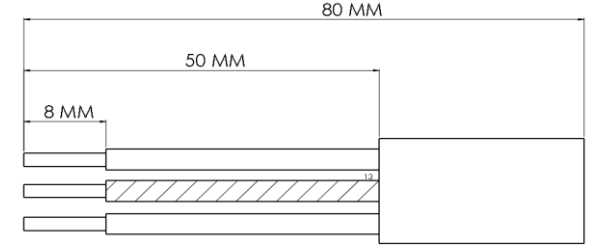
**IP66**



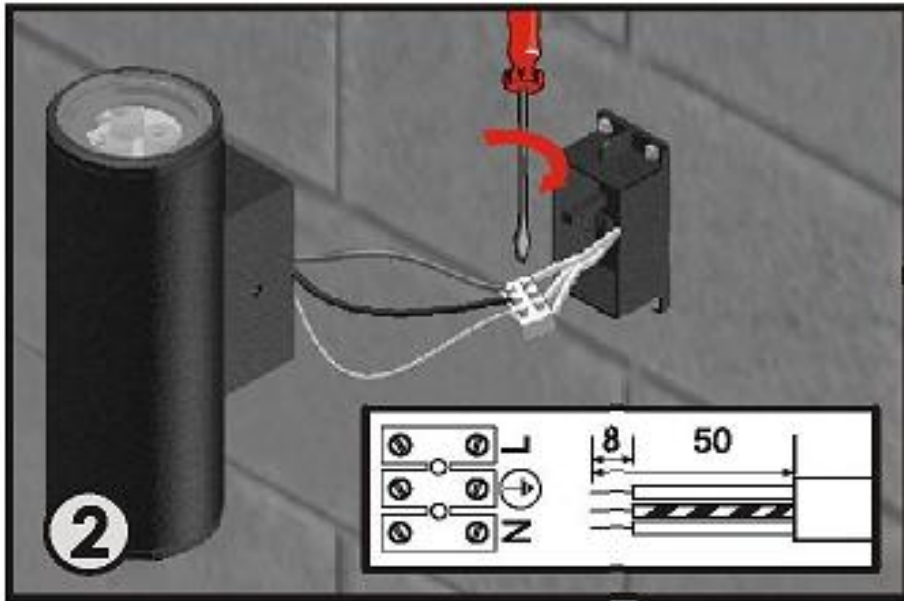
ON  
OFF



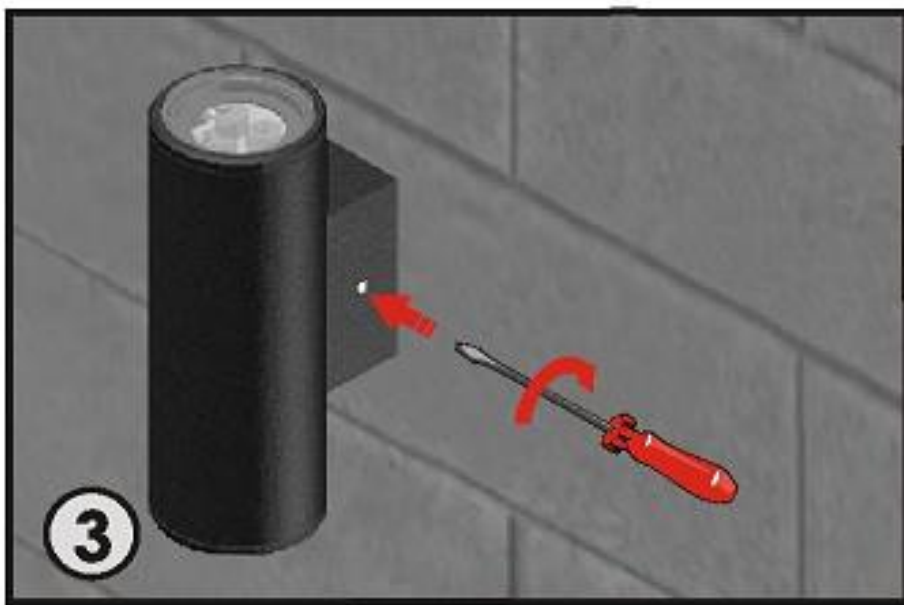
Kablo Kesim Boyları  
Power Cable Cuntting Dimensions



**1. Klemens kutusunu duvara monte ediniz. /**  
Mount the terminal box on wall.



**2. Enerji besleme bağlantısını şekildeki gibi yapınız. /**  
Make the power supply connection as shown.



**3. Armatür gövdesi ile klemens kutusu birbirine monte edilir ve montaj tamamlanmış olur. /**  
Armature body and terminal box are assembled each other, assembly process is completed.

Bu talimat armatürle ilgili ileride oluşabilecek bakım işleri için saklanmalıdır. Yukarıdaki talimatlara uygunsuzluk otomatik olarak EAE'nin sorumluluğu dışındadır. The present intrunction paper has to bekept for any future maintenance oparation the luminate. Non compliance with the above will automatically release EAE's from any responsibility.