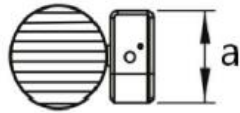
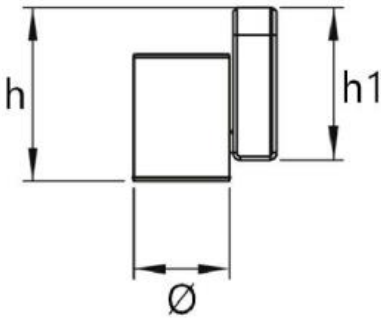
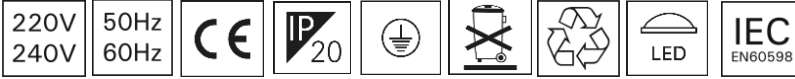




Güvenlik Ekipmanı
Security Equipment



Montaj Ekipmanı
Assembly Equipment



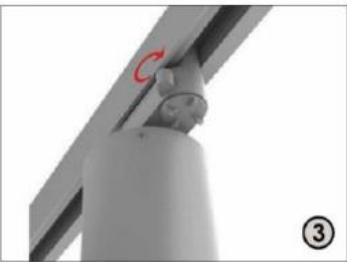
Dimensions (mm)

	Ø	a	h	h1
Three-Phase Ray	85	78	153	150



1 - 2

Key rail socket is inserted to Three-phase - Single-phase Rail in an oblique manner.



3 - 4

Locking catch on key rail socket is turned as shown, then assembly process is complete.



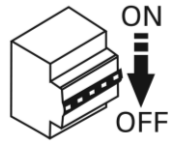
AYDINLATMA

Bu armatür ilgili standartlara uygun dizayn edilmiş ve üretilmiştir. Bu armatürün içindeki ışık kaynağı ve harici bükülgen kablo veya kordonun hasar görmesi durumunda sadece imalatçı tarafından ya da imalatçının yetkili servisi ya da eşdeğer nitelikte bir kişi tarafından değiştirilmelidir. Armatür içindeki, sürücü (driver) yalnızca üretici tarafından değiştirilmelidir.

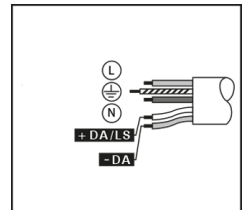
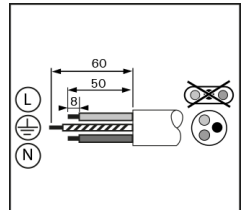
This luminaire has been designed and manufactured according to relevant standards. If the external flexible cable or cord of this luminaire is damaged, and the light source contained in this luminaire shall only be replaced by the manufacturer or his service agent or a similar qualified person. The driver inside of the luminaire can only be replaced by the manufacturer.



Dikkat, elektrik çarpması riski
Caution, risk of electric shock



Kablo Kesim Boyları
Cable Cutting Dimensions



Bu talimat armatürle ilgili ileride oluşabilecek bakım işleri için saklanmalıdır. Yukarıdaki talimatlara uygunluk otomatik olarak EAE'nin sorumluluğu dışındadır. The present instruction paper has to be kept for any future maintenance operation the luminaire. Non-compliance with the above will automatically release EAE's from any responsibility.

İkitelli OSB Eski Turgut Ozal Caddesi No:20 Basakşehir / İSTANBUL - TÜRKİYE Phone: +90 212 413 21 00 (pbx) Fax: +90 212 549 37 90
GERMANY: +49 2102 44142-0 ITALY: +39 02 36 555 400
www.eaelighting.com

engineering the light