



INDUSTRY
LIGHTING PRODUCTS



TITLE

Publisher:

EAE Lighting

Creation and design:

EAE Lighting

Image credits:

EAE Lighting

Disclaimer:

We assume no responsibility for the content of references cited in this catalog. The content of the references is the sole responsibility of their publishers.

Copyright:

All contents of this catalog are protected by copyright. The contents may not be stored, reproduced, distributed or used in any other way without the express written permission of EAE Aydınlatma A.Ş.

Contents

SROUND INDUSTRY	4
SROUND	6
REVOLED-X	8
REVERO	10
RERERO NG	12
HBC	14
HBL	16
HBC - EXPROOF	18
EX LINE MINI	20
CUSHIDO	22
PROLIT - EXPROOF	24
PROLIT KOMPAKT	26
PROLIT V.3	28
PROLIT PLUS	30
PROLIT EFFECT	32
MFL	34
RA 1-2-3	36
HORUS 1-2	38
OSIRIS	40
ARKTOS NG	42
INFINO	44
M-LINE	48
GALIS MEGA	50
GALIS	52
YPB BATWING	54
LINA	56
LINA NG	58
COZAR	60
TORNADO	62
YPL NG	64
GPRONA	66
SPRONA	68
AGILITY	70
ALPHA	72
KANOLED	74
DIMKO	76
DL BUSBAR	78

SROUND INDUSTRY

-35°C +80°C



- Iron & Steel & Heavy Industry
- Aviation
- Cranes
- Automotive Industry
- Logistics
- Glass & Ceramic Production
- Mechanical Engineering and Electronics
- Chemical Industry
- Woodworking Industry
- Sports Facilities

High resistance up to +80°C in industrial environments

- ✓ Operating ambient temperature up to + 80°C (with standard drive)
- ✓ Maximum performance in harsh industrial environments
- ✓ Maintenance-free LED with long service life
- ✓ 1 High luminous efficacy of up to 77 lm/W
- ✓ Various beam angles including Arena/Lovvbay optics
- ✓ Various mounting and fixing systems
- ✓ Unique design



SROUND Industry

52 W – 190 W
8629 lm - 31219 lm

Arena / Lowbay

SROUND Mini

33 W – 88 W
4527 lm - 11367 lm

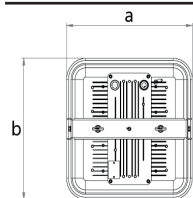
75° / 103°

SROUND Double

104 W - 260 W
17258 lm - 44000 lm

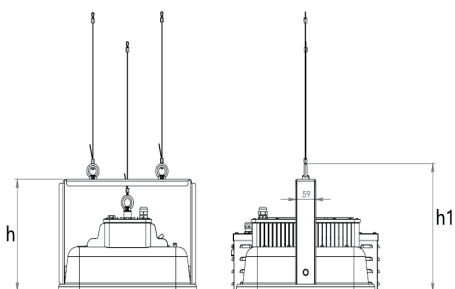
Arena / Lowbay

Technical Drawing

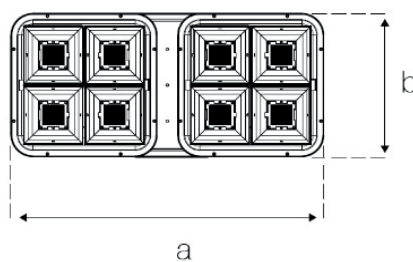


Dimensions (mm)

	a	b	h
Standard	400	400	190
Dual Model	842	400	320

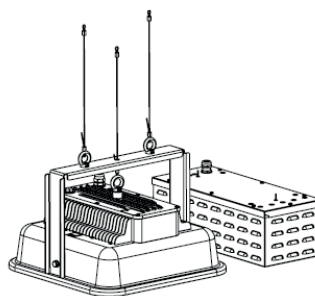


Dual Technical Drawing

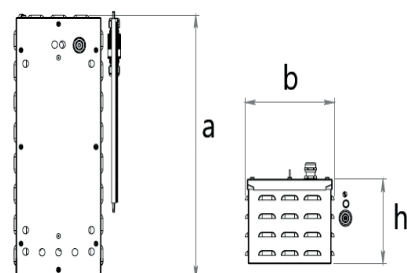


Weight (kg)

Standard	8,3
Dual Model	19,1



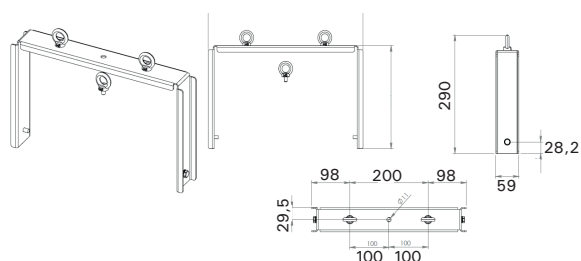
External Drive Module



Dimensions (mm)

	a	b	h
External Drive Module	429	184	138

Hanger Set



Dimensions (mm)

	a	b	h
Hanger Set	396	252,5	290

SROUND

-35°C +75°C



- Iron-Steel & Heavy Industry
- Aviation
- Cranes
- Automotive Industry
- Logistics
- Glass and Ceramics
- Machinery and Electronics
- Chemical and Plastic
- Wood and Paper
- Sports Halls

For those who aim high

- ✓ Ultra-high performance LED high ceiling luminaire
- ✓ Operating temperature up to + 75°C
- ✓ 9000lm - 31000lm Power range
- ✓ Arena / Lowbay / Extra - Lowbay / Asymmetric 4 different beam angles
- ✓ Up to 177 lm/W
- ✓ Single point / double point / busbar / cable tray suspension kits
- ✓ 1 - 3 hours EMG / DALI - RF wireless control options



SROUND V3

52W - 216W
9130lm - 31564lm

60° / 100° / 110° / AS
Arena / Lowbay /
Extra-Lowbay / Asymmetric



SROUND Mini

28W - 337W
4294lm - 43600lm

30°x90° / 30° / 60° / 90° /
AS / DA / 25x105°



SROUND Crane

28W - 128W
4294lm - 21078lm

30°x90° / 30° / 60° / 90° /
AS / DA / 25x105°

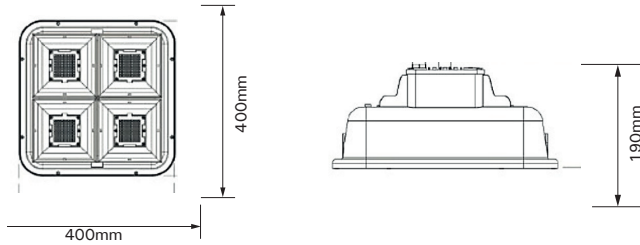


SROUND Red

28W - 128W
4294lm - 21078lm

30°x90° / 30° / 60° / 90° /
AS / DA / 25x105°

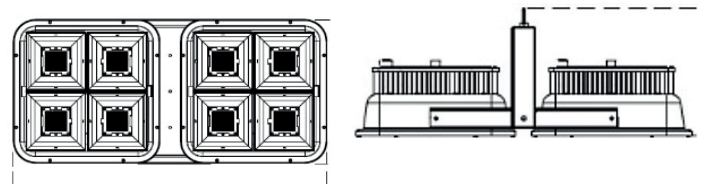
Technical Drawing



Dimensions (mm)

	a	b	h
Standart	400	400	190
İkili Model	842	400	320

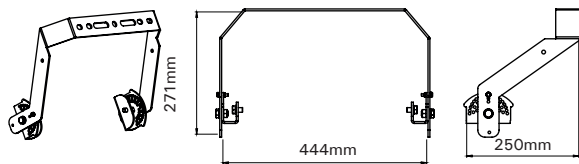
Dual Technical Drawing



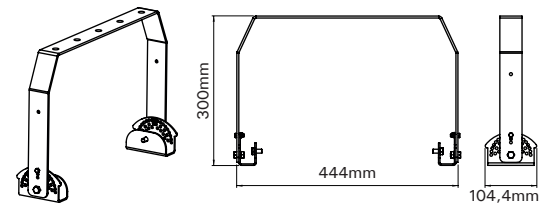
Weight (kg)

Standart	8,3
İkili Model	19,1

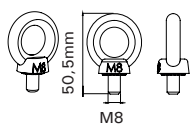
Crane Hanger Set



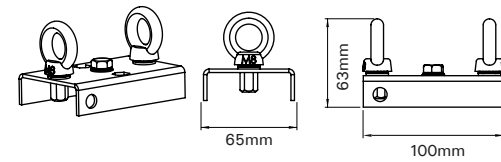
Suspended Hanger Set



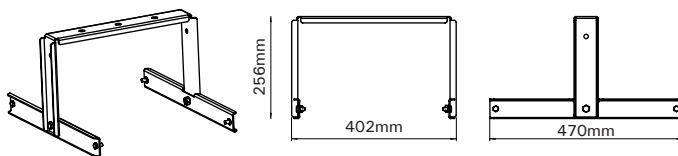
Mapa Single Hanger Set



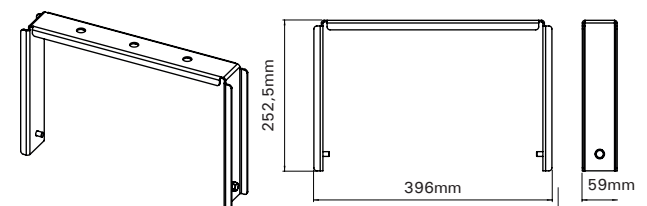
Mapa Double Hanger Set



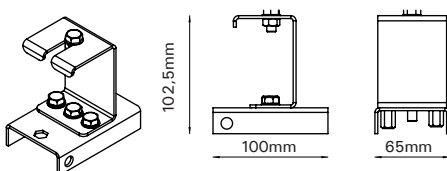
Double Hanger Set



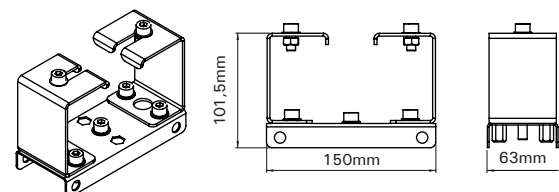
Single U Type Hanger Set



Cable Tray Hanger Set

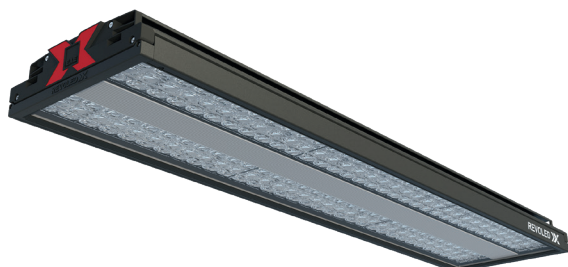


Cable Tray Double Hanger Set



REVOLED-X

-40°C +70°C



- Iron-Steel & Heavy Industry
- Aviation
- Cranes
- Automotive Industry
- Logistics
- Glass and Ceramics
- Machinery and Electronics
- Chemical and Plastic
- Wood and Paper
- Sports Halls

Experience performance at the highest level

- ✓ Ambient operating temperature up to +70°C
- ✓ 3865lm - 43600lm output range
- ✓ Efficiency up to 171 lm/W
- ✓ 30°x90° / 30° / 60° / 90° / AS / DA / 25x105° 7 different beam angle options
- ✓ Cable tray / Busbar / Angled wall / Seismic
- ✓ 1 - 3 hours EMG / DALI - Wireless control options RF



REVOLED-X

28W - 128W
4294lm - 21078lm

30°x90° / 30° / 60° / 90° /
AS / DA / 25x105°



REVOLED-X HE

26W - 117W
4165lm - 19986lm

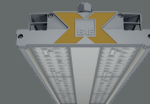
30°x90° / 30° / 60° / 90° /
AS / DA / 25x105°



REVOLED-X EVO

67W - 338W
9235lm - 43600lm

30°x90° / 30° / 60° / 90° /
AS / DA / 25x105°



REVOLED-X EVO IP65

67W - 337W
9235lm - 42102lm

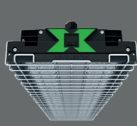
30°x90° / 30° / 60° / 90° /
AS / DA / 25x105°



REVOLED-X HOT / HOT PLUS

26W - 129W
3865lm - 18546lm

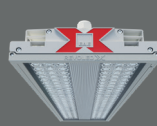
30° / 60° / 90°



REVOLED-X SPORT

28W - 337W
4294lm - 43600lm

30°x90° / 30° / 60° / 90° /
AS / DA / 25x105°



REVOLED-X STERIL

28W - 128W
4294lm - 21078lm

30°x90° / 30° / 60° / 90° /
AS / DA / 25x105°

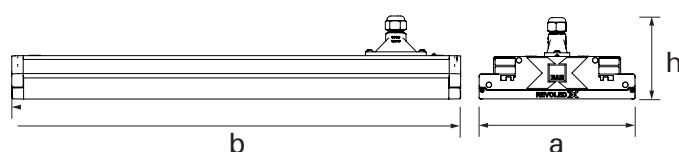


REVOLED-X FOOD

28W - 128W
4294lm - 21078lm

30°x90° / 30° / 60° / 90° /
AS / DA / 25x105°

Technical Drawing



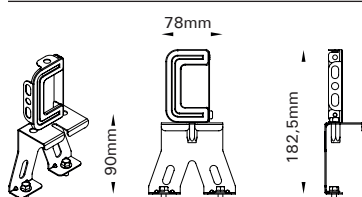
Dimensions (mm)

	a	b	h
Standard	423	209	109
DALI CG (Dual Input)	493	209	109
1,3 hours EMG*	950	209	109
Boxed 1.3 hours EMG*	603	209	135

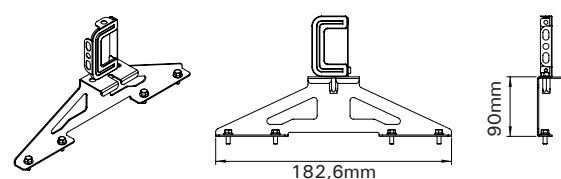
Weight (kg)

	kg
Standard	3,24
DALI CG (Dual Input)	3,77
1,3 hours EMG*	7,26
Boxed 1.3 hours EMG*	7

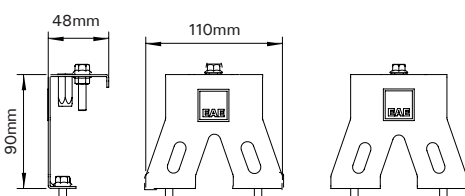
Bar Hanger Set



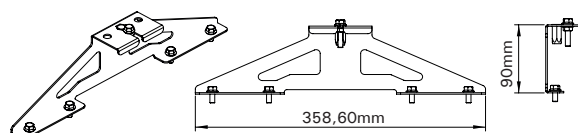
Double Bar Hanger Set



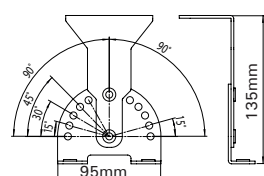
Tray Hanger Set



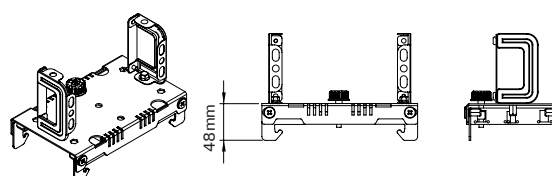
Double Tray Hanger Set



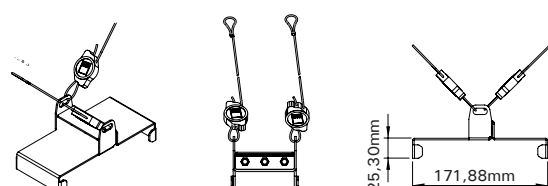
Graded Hanger Set



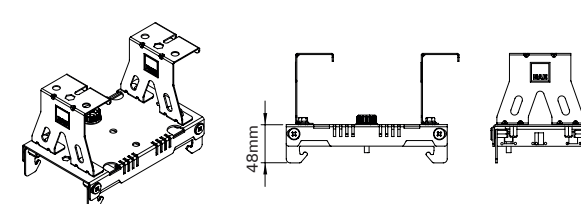
90 Degree Busbar Hanger Set



Seismic Hanger Set



90 Degree Pan Hanger Set



REVERO

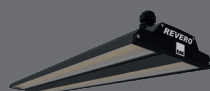
-20°C +40°C



Maximum comfort in lighting

- Industrial Plants
- Aviation and Airports
- Logistics
- Sports Halls

- ✓ LED luminaire with high ceiling
- ✓ IP65 & IK05 resistant aluminium injection housing
- ✓ Optical options: microprismatic diffuser / transparent diffuser
- ✓ -20°C / +40°C Ambient operating temperature
- ✓ 1 - 3 hours EMG / DALI control options

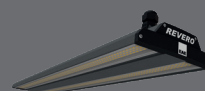


REVERO

70W - 149W
9294lm - 18822lm

Wide Angle

Microprismatic Diffuser



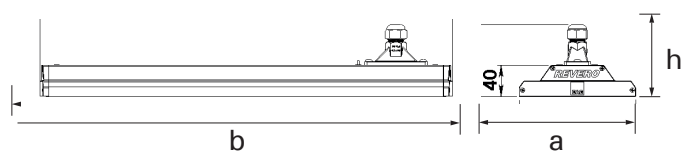
REVERO

70W - 149W
10774lm - 22397lm

105°

Transparent Diffuser

Technical Drawing



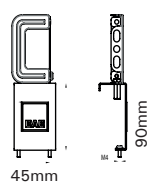
Dimensions (mm)

	a	b	h
Standard	773	148	92

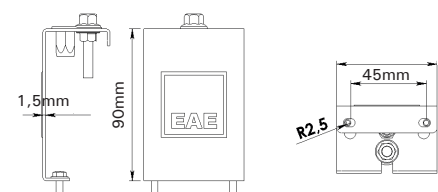
Weight (kg)

	kg
Standard	1,9

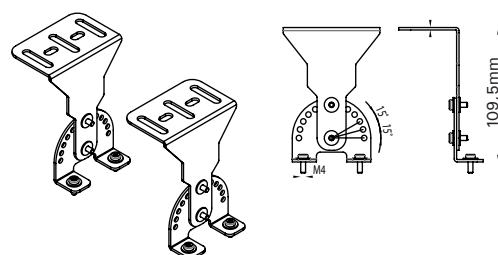
Bar Hanger Set



Tray Hanger Set



Graded Hanger Set

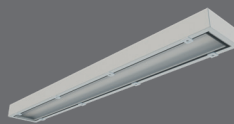




- Enclosed Warehouses
- Factories and workshops
- Sports Halls
- Service Stations
- Commercial Buildings

Optimal lighting quality, minimal costs

- ✓ IP64 & IK08 optimized, lightweight housing design
- ✓ High energy savings for enterprises
- ✓ Easy maintenance due to advanced design
- ✓ Color temperature optional 4000K / 6000K
- ✓ -25°C / +35°C ambient operating temperature
- ✓ Can be mounted on busbar or cable tray



RERERO NG

73W - 106W
9200lm - 13600lm

Tempered Ground Glass

Technical Drawing



Dimensions (mm)

	a	b	h	h1
Standard	1134	154	65,5	96,8

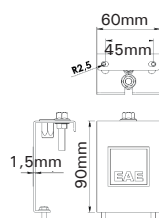
Weight (kg)

	kg
Standard	6,5

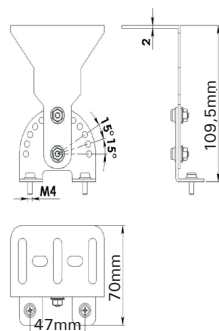
Bar Hanger Set



Tray Hanger Set



Graded Hanger Set

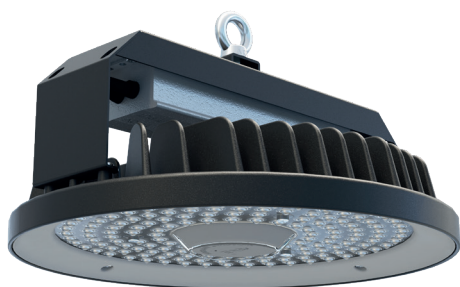


HBC

-20°C +53°C

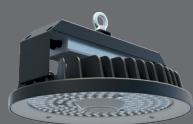


Functional and efficient lighting



- Logistics
- Machinery and Electronics
- Chemical and Plastic
- Wood and Paper
- Sports Halls
- Shopping Centres

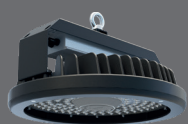
- ✓ High performance LED high-ceiling fixture
- ✓ Power consumption 79W - 220W
- ✓ Options for open front models / glass models
- ✓ Various optics options
- ✓ Single point / Cable tray / Busbar support set options
- ✓ 1 - 3 hour EMG / 1-10V - DALI control options



HBC Lens

79W – 220W
9822lm - 26980lm

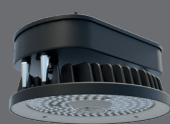
60° / 90°



HBC Lens + Glass

79W – 179W
8897lm - 20101lm

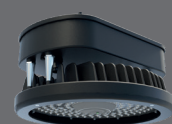
60° / 90°



HBC Lens + EMK

79W – 179W
9822lm - 23229lm

60° / 90°

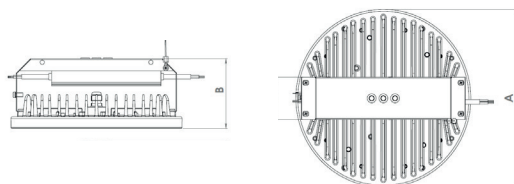


HBC Lens + Glass EMK

79W – 179W
8897lm - 20101lm

60° / 90°

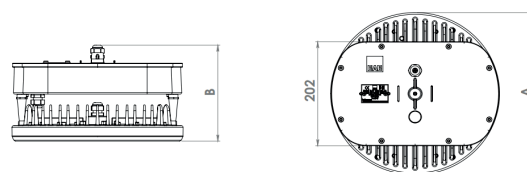
Technical Drawing



Dimensions (mm)

	a	b
Standard	315	127
EMK Modul	315	162

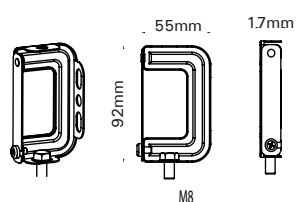
Technical Drawing (EMK Module)



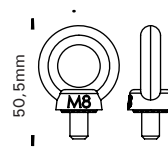
Weight (kg)

	kg
Standard	4
EMK Modul	6

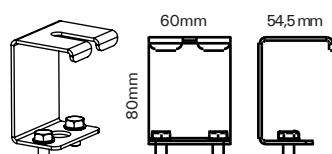
Bar Hanger Set



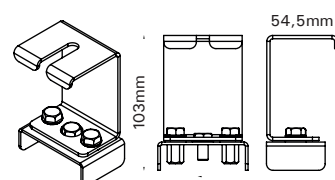
Single Mapa Hanger Set



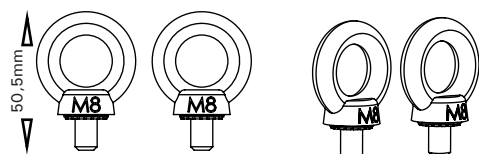
Tray Hanger Set



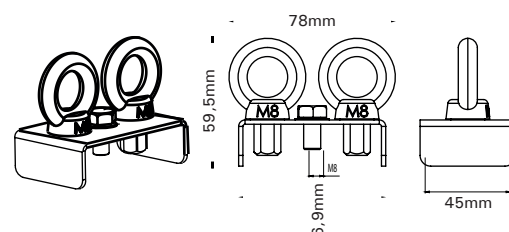
Tray EMK Hanger Set



Double Mapa Hanger Set



Double Mapa EMK Hanger Set



HBL

-30°C +65°C



Optimized lighting performance for industrial plants

- ✓ High performance LED high-ceiling fixture
- ✓ IP65 / IP66 & IK10 aluminum injection housing & silk screened glass
- ✓ -30°C / +65°C ambient operating temperature
- ✓ 1- 3 hours EMG / DALI Control options

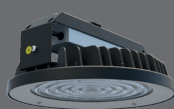
- Industrial Plants
- Aviation and Airports
- Logistics
- Sports Halls



**HBL
IP65**

91W - 182W
14242lm - 27418lm

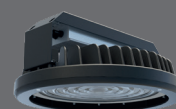
LENS
55° / 90°



**HBL
IP66**

65W - 184W
9295lm - 27617lm

LENS
55° / 90°

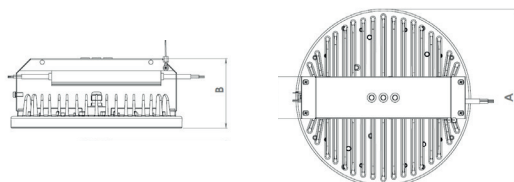


**HBL
IP66 + GLASS**

65W - 184W
8700lm - 25260lm

LENS
55° / 90°

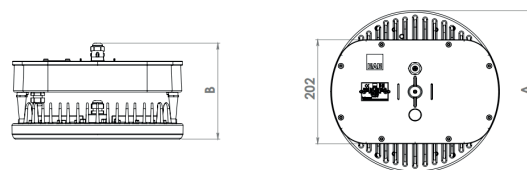
Technical Drawing



Dimensions (mm)

	a	b
Standard	315	127
EMG Modul	315	162

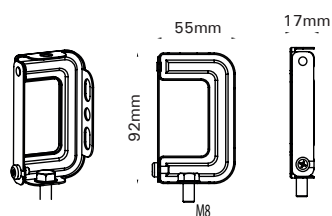
Technical Drawing (Ack Module)



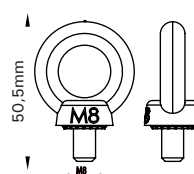
Weight (kg)

	kg
Standard	4,1
EMG Modul	5,9

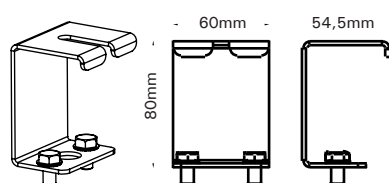
Bar Hanger Set



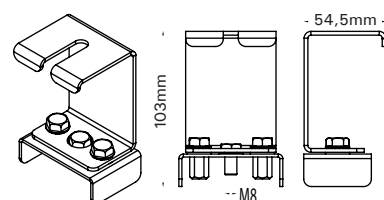
Single Mapa Hanger Set



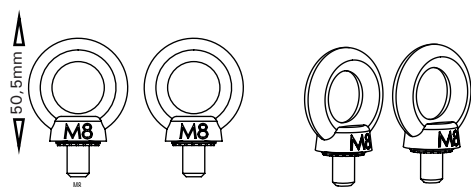
Tray Hanger Set



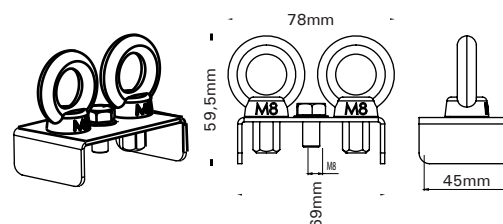
Tray EMG Hanger Set



Double Mapa Hanger Set



Double Mapa ACK Hanger Set



HBC
EXPROOF

-20°C +70°C



- Oil Refineries
- Paint and Melamine
- Production Facilities
- Petrochemicals and Chemistry
- Petrol Stations

Extremely durable for exproof areas

- ✓ Highly resistant Exproof LED luminaire
- ✓ Zone classification generated for installations where explosive and flammable substances are present: Zone 1 2GD
- ✓ IP66 & IK10 enclosure & toughened screen-printed glass
- ✓ Design suitable for environments with hazardous substances
- ✓ High efficiency with low power consumption

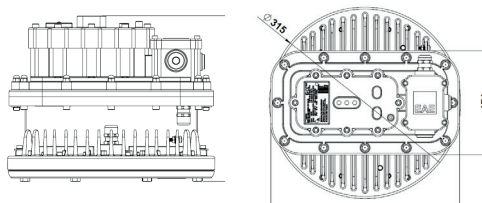


HBC
EXPROOF

65W – 197W
8000lm - 25300lm

50° / 55° / 80° / 90°

Technical Drawing



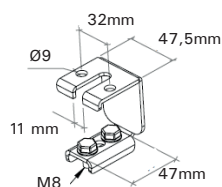
Dimensions (mm)

	a	b
Standard	315	201

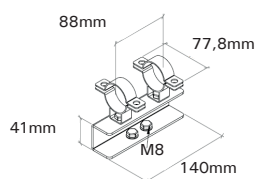
Weight (kg)

	kg
Standard	7

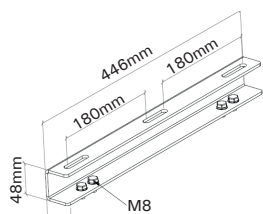
Cable Tray Hanger Set



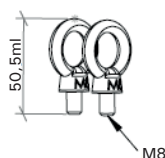
Pipe Assembly Hanger Set



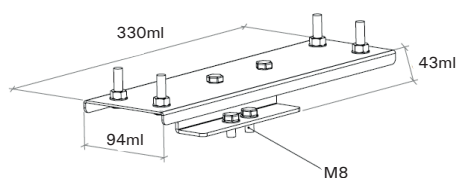
Ceiling Tray Assembly Hanger Set



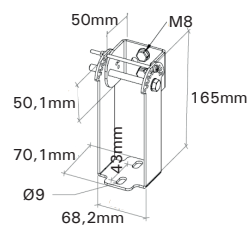
Ceiling Tray Assembly Hanger Set



Flush Ceiling Wall Hanger Set

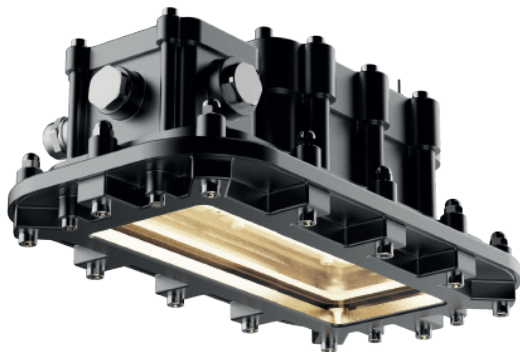


Ceiling Tray Assembly Hanger Set



EX-LINE MINI

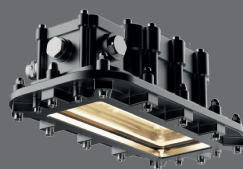
-40°C +45°C



- Oil Refineries
- Paint and Melamine
- Production Facilities
- Petrochemicals and Chemistry
- Petrol Stations

High quality Ex-Proof luminaire with robust housing

- ✓ Zone classification in plants where explosive and flammable substances are produced: Zone 1 / 21 / 2 / 22 Group / Kate-gori:II / 2GD Protection class: db / tb / eb
- ✓ IP66 & IK10 resistant aluminum injection housing
- ✓ Long life without maintenance
- ✓ -40°C / 45°C ambient operating temperature
- ✓ DALI control option

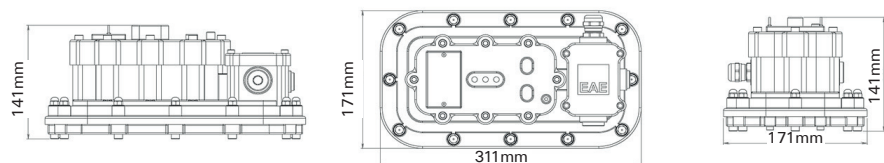


EX-LINE MINI

20W – 57W
2965lm - 7798lm

Wide Angle

Technical Drawing



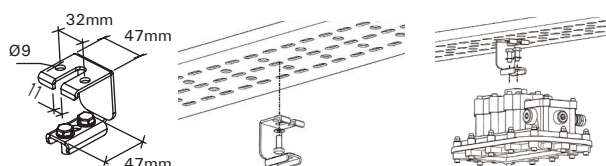
Dimensions (mm)

	a	b	h
Standart	311	171	141

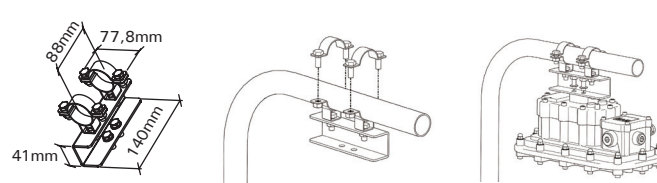
Weight (kg)

	kg
Standart	5,2

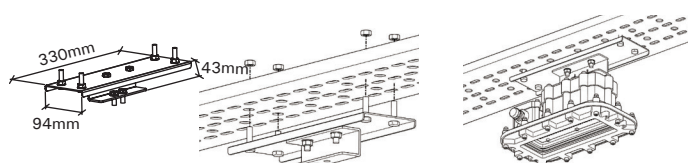
Cable Tray Ceiling Single Assembly -1



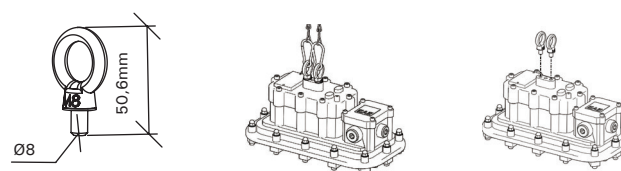
Pipe Assembly Hanger Set



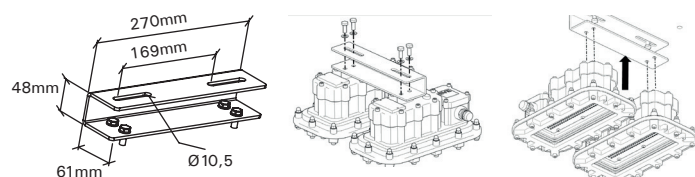
Cable Tray Ceiling Single Assembly -2



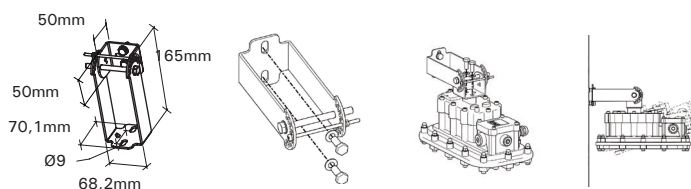
Chain Mounting Hanger Set



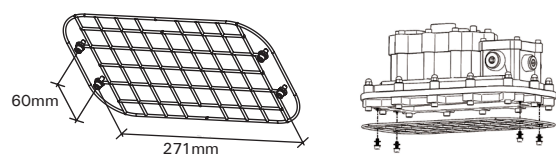
Cable Tray Ceiling Double Assembly



Wall Angled Assembly Hanger Set



Optional Wire Grid



CUSHIDO

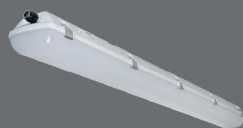
-25°C +55°C



High performance, durable exproof luminaire

- ✓ Highly durable waterproof LED luminaire
- ✓ IP65 & IK10 housing & Polycarbonate diffuser
- ✓ -25°C / 55°C ambient operating temperature
- ✓ 1 - 3 hours EMG / DALI control options
- ✓ Zone classification generated for installations where explosive and flammable substances are present:
Zone 2/22

- Oil Refineries
- Paint and Melamine Areas
- Production Facilities
- Petrochemicals and Chemistry
- Petrol Stations

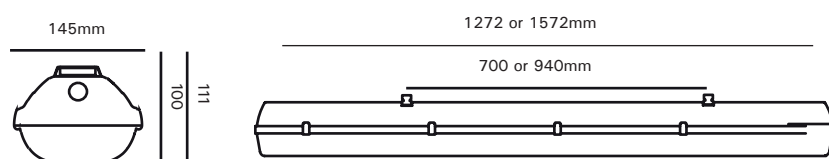


CUSHIDO

42W - 71W
5150lm - 7798lm

Polycarbonate (PC)
Wide Angle

Technical Drawing



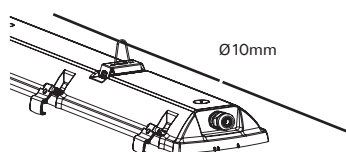
Dimensions (mm)

	a	b	h
120 cm	145	1272	111
150 cm	145	1572	111

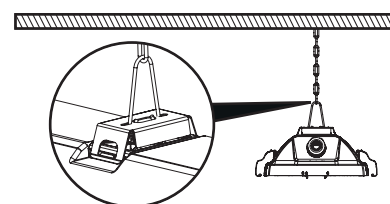
Weight (kg)

	kg
120 cm	3,4
150 cm	4,4

Wall Installation and Ceiling Support Installation



Wall and Ceiling Angled Mounting



PROLIT EXPROOF

-20°C +55°C



- Logistics
- Shipyards
- Tanker Filling and Unloading Areas
- Oil Refineries
- Onshore Facilities
- Ship and Shipbuilding
- Aircraft Hangars

Ex Proof projector for high requirements

- ✓ Ultra-high-power LED projector
- ✓ Special housing designed for harsh environments
- ✓ Wide lumen package and flexible optical options
- ✓ Stable light, maintenance-free, long service life
- ✓ DALI control option
- ✓ Zone classification generated for installations where explosive and flammable substances are present:
Zone 2/22 Group / Category: II / 3GD Protection class: ec / tc

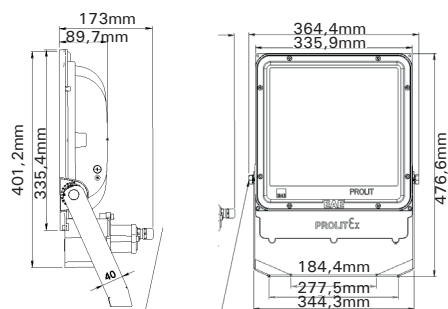


PROLIT EXPROOF

102W – 206W
13716lm - 25760lm

22° / 32° / 57° / 99° / AS

Technical Drawing



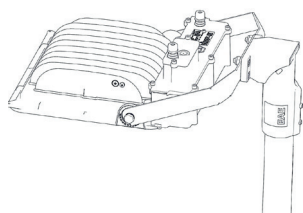
Dimensions (mm)

	a	b	b1	c	c1
Standard	336	336	476	88	173

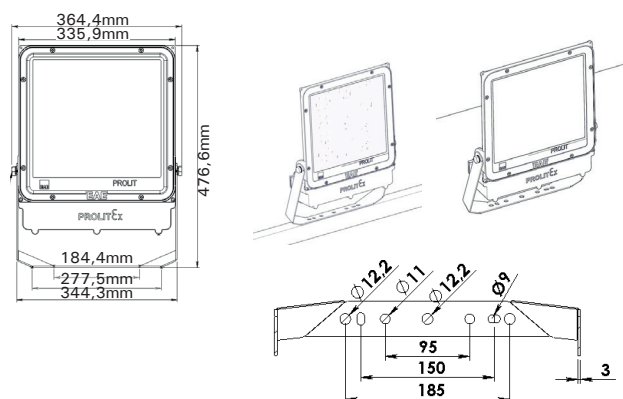
Weight (kg)

	kg
Standard	7,1

Pole Type Installation



Ceiling and Wall Mounting



It is obligatory to assemble based on the size of 185mm.

PROLIT KOMPAKT



- Logistics
- Shipyards
- Tanker Filling and Unloading Areas
- Oil Refineries
- Onshore Facilities
- Ship and Shipbuilding
- Aircraft Hangars

-20°C +40°C



Compact lighting solution for many applications

- ✓ Ultra high power LED projector
- ✓ Save up to 53% or 70% energy with DALI control
- ✓ Special housing adaptations for Tunnel / Marine Prolit Tunnel / Prolit Vessel.
- ✓ Power range from 4200lm - 14440lm and power consumption from 32W - 124W
- ✓ Various beam angle options from 16° to 99°. Also asymmetric, sport and OT lenses
- ✓ Light weight, maintenance free, long lifetime



PROLIT KOMPAKT

70W - 124W
7371W - 14440lm

PMMA LENS
16° / 18° / 22° / 23° / 27° /
35° / 46° / 60° / 90° / 98° /
99° / AS

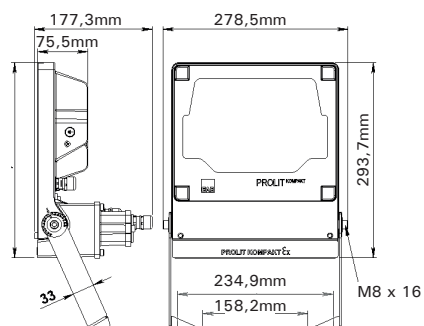


PROLIT KOMPAKT TUNNEL

32W - 53W
4200lm - 6900lm

PMMA LENS
Asymmetric / Symmetric

Technical Drawing



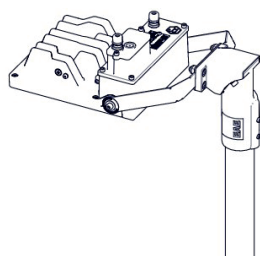
Dimensions (mm)

	a	b	h
Standard	276	77	330

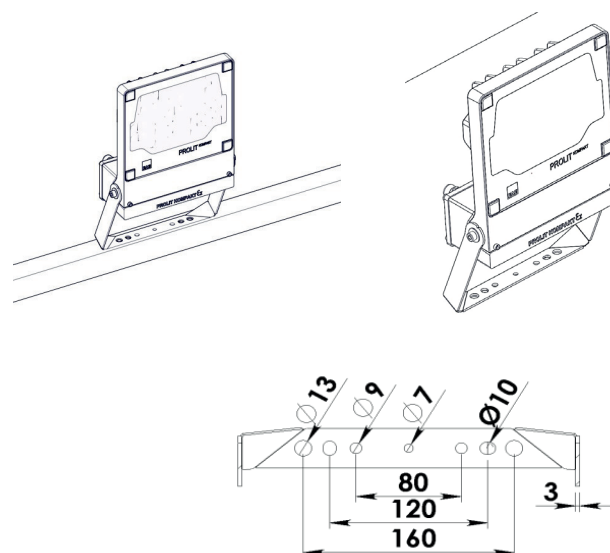
Weight (kg)

	kg
Standard	3,6

Pole Type Installation



Ceiling and Wall Mounting



PROLIT

V.3



- Open Spaces
- Ports
- Sports Halls
- Industrial Plants
- Parking lots
- Advertising Boards
- Building Facades

-20°C +40°C



Ultra-high performance luminaire for floodlight applications

- ✓ Ultra high power LED projector
- ✓ Excellent projectors for 1:1 replacement of 70-230 W HID
- ✓ Energy savings of up to 65% or 80%.
- ✓ Special hull adaptation for tunnel / ship applications Prolit Tunnel / Prolit Ship
- ✓ 10700lm - 28306lm power range / 70W - 230W power input range
- ✓ Various beam angle options from 10° to 99°. Also asymmetric, sport and OT lenses
- ✓ Maintenance free, long life
- ✓ DALI / DIMKO / 1-10V / RF control options



PROLIT V.3

94W - 230W
14879lm - 28306lm

PMMA LENS

10° / 13° / 16° / 18° / 22° / 23° / 27° /
30° / 46° / 52° / 57° / 60° / 90° / 98° /
99° / OT / AS / SP



PROLIT TUNNEL

70W - 155W
10700lm - 19700lm

Asymmetric / Symmetric



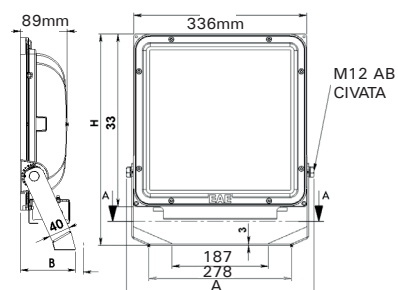
PROLIT SHIP

102W - 206W
14108lm - 25760lm

PMMA LENS

22° / 32° / 57° / 99° / AS

Technical Drawing



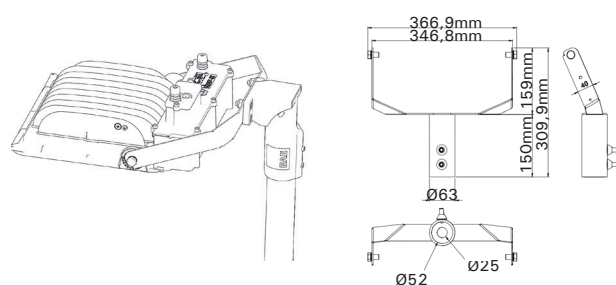
Dimensions (mm)

	a	b	c	h	h1
Standart	336	361	412	89	95

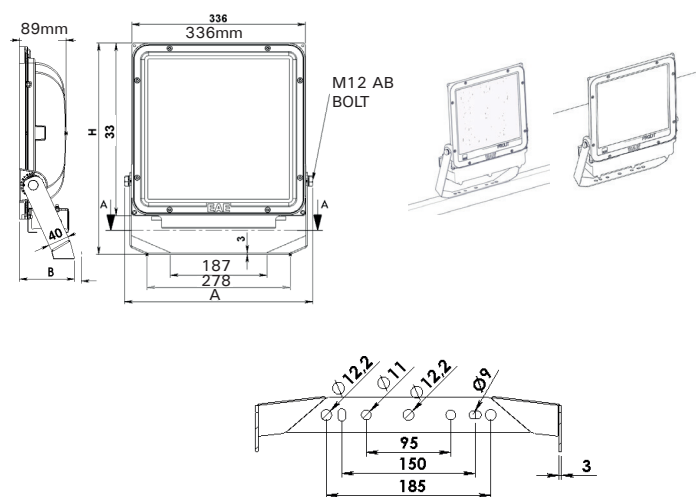
Weight (kg)

	kg
Standart	7,1

Pole Type Installation



Ceiling and Wall Mounting



It is obligatory to assemble based on the size of 185mm.

PROLIT PLUS

-30°C +45°C



- General Open Spaces
- Ports
- Sports Halls
- Industrial plants
- Parking lots
- Advertising Boards
- Building Facades

Created for high requirements

- ✓ Designed for high requirements
- ✓ Perfect for 1:1 replacement of 1000VV HID projectors. Save up to 55% or 70% energy with DALI control.
- ✓ Single / dual housing options
- ✓ Special housing customization for Port / Apron / Tunnel
PRP PORT / PRP APRON / PRP TUNNEL
- ✓ 26klm - 111 klm output range / 195W - 854W power consumption range
- ✓ Various beam angle options from 16° to 99°. Also asymmetric, sport, OT and special optical airports.
- ✓ Maintenance free, long life
- ✓ DALI / 1-10V / DIMKO / RF control options



PROLIT PLUS

195W - 854W
26000lm - 111800lm

PMMA LENS

16° / 18° / 23° / 27° / 30° / 35° / 45° /
46° / 52° / 60° / 90° / 98° / OT / AS / SP



PROLIT PLUS PORT

202W - 427W
26000lm - 111800lm

PMMA LENS

16° / 22° / 27° / 32° / 52°
/ 57° / 98° / 99° / AS



PROLIT PLUS APRON

221W - 612W
24841lm - 74132lm

PMMA LENS OT



PROLIT PLUS TUNNEL

223W - 500W
30000lm - 65000lm

PMMA LENS Asymmetric / Symmetric

PROLIT EFFECT



- Shipyards
- Ports
- Ship and Shipbuilding
- Aircraft Hangars

-30°C +55°C



The lightest and most efficient projector on the global market

- ✓ Extremely durable LED façade and area luminaire
- ✓ Housing with high mechanical resistance (IP66 and IK10) and diffuser of tempered, screen-printed glass
- ✓ Various beam angle options from 13° to 90°. Also asymmetric, OT and sports lens
- ✓ -30°C / 55°C ambient operating temperature
- ✓ DALI control option

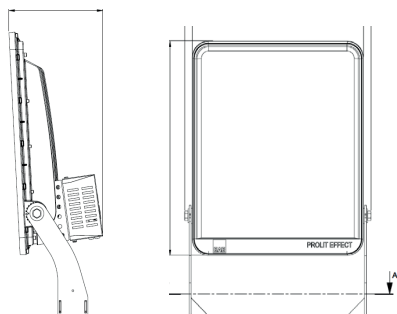


PROLIT EFFECT

420W - 770W
57945lm - 102371lm

PMMA LENS
13° / 22° / 23° / 30° / 46° /
60° / 90° / AS / OT / SP

Technical Drawing



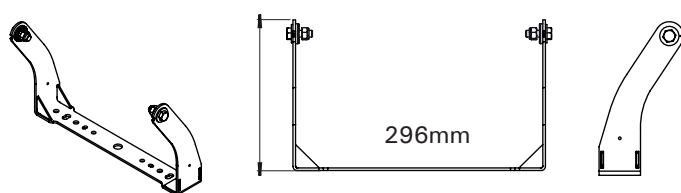
Dimensions (mm)

	a	b	h
Standard	512	270	731

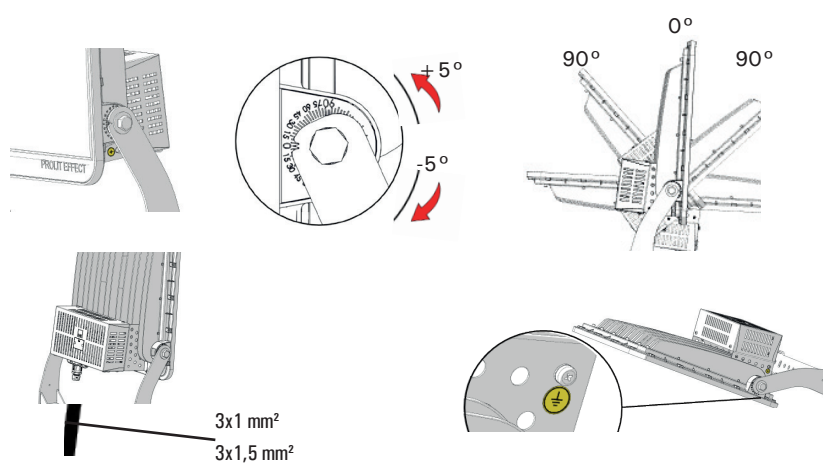
Weight (kg)

	kg
Standard	18,8

Foot Set



Prolit Effect Installation Guide



MFL

-30°C +40°C



- Shipyard
- Ports
- Ship and Shipbuilding
- Aircraft Hangars
- Passenger Ship Facades

Extra innovative projector designed for marine applications

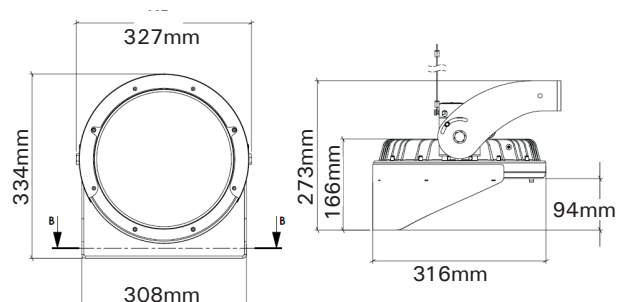
- ✓ High-performance LED luminaire
- ✓ Body colors available for special applications
- ✓ Seawater resistant housing
- ✓ IP66 and IK10 housing with high mechanical resistance
- ✓ High efficiency LED
- ✓ -30°C / 40°C ambient operating temperature
- ✓ DALI control option



65W - 164W
9295lm - 24364lm

Mid Power LED
55°

Technical Drawing



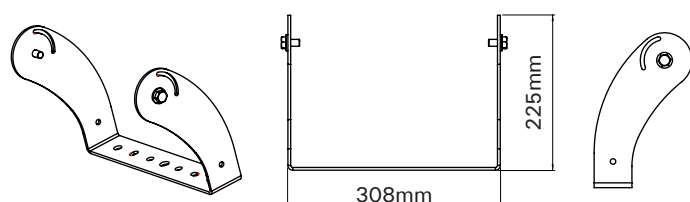
Dimensions (mm)

	a	b	h
Standard	327	344	273

Weight (kg)

	kg
Standard	8,1

Foot Set



RA / RA2 / RA3

-25°C +50°C



- City and residential streets
- Bridges
- Bicycle and pedestrian paths
- Squares
- Parking lots
- Perimeter lighting
- Roads and highways

Powerful street and road lighting

- ✓ Powerful LED mast top luminaire
- ✓ Light weight, maintenance-free, long service life and easy installation
- ✓ 3.6 Klm - 27.7 Klm range / 25W - 218W power consumption
- ✓ Compatibility with DALI/RF radio systems
- ✓ Class I and Class II options
- ✓ Intelligent lighting control system via DIMKO



RA

25W – 58W
3574lm - 7962lm

PMMA LENS 100° / 110° /
Wide Angle / Extra Wide
Angle / OT

RF Wireless and DALI /1-10V
+ Dimko control options



RA 2

30W – 134W
3637lm - 15894lm

PMMA LENS 100° / 110° /
Wide Angle / Extra Wide
Angle / OT

RF Wireless and DALI /1-10V
+ Dimko control options



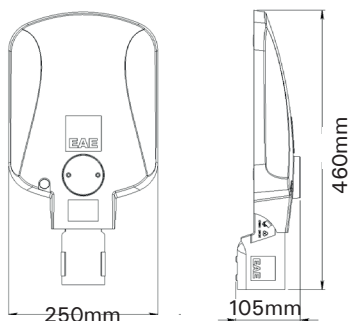
RA 3

112W - 218W
15378lm - 27700lm

PMMA LENS 100° / 110° /
Wide Angle /
Extra wide angle / OT

RF Wireless and DALI /1-10V
+ Dimko control options

Technical Drawing



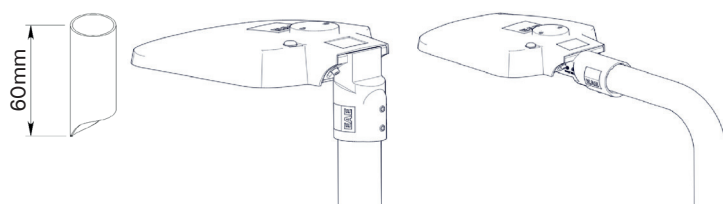
Dimensions (mm)

	a	b	h
Standard	250	460	105

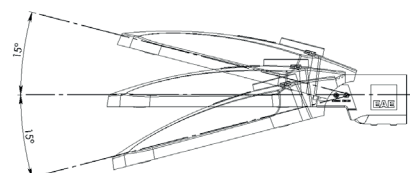
Weight (kg)

	kg
Standard	3,4

Direct Mounting



Assembly Detail



HORUS 1-2

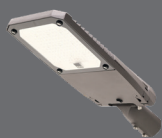
-20°C +35°C



- Street and Environment
- Ports
- Highways
- Shipyards
- Open Spaces
- Urban Areas

Modern and highly efficient street and perimeter lighting

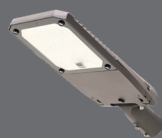
- ✓ Highly durable LED luminaire for street lighting
- ✓ High mechanical resistance housing with IP66 and IK08 resistance and tempered transparent glass
- ✓ -20°C / 35°C ambient operating temperature
- ✓ Easy intervention system
- ✓ DALI /1-10V + Dimko options
- ✓ Drive and led intervention sections separated



HORUS -1

32W – 115W
4238lm - 15036lm

Mid Power LED
100° / 110°

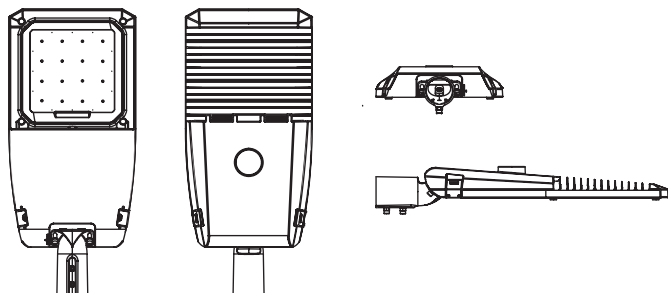


HORUS -2

86W - 171W
10997lm - 23044lm

Mid Power LED
100° / 110°

Technical Drawing



Dimensions (mm)

	a	b	h
Horus 1	601	423	120
Horus 2	721	313	120

Weight (kg)

	kg
Standard	3,4
Standard	3,4

OSIRIS

-20°C +40°C



- Street and Environment
- Ports
- Highways
- Shipyards
- Open Spaces
- Urban Areas

High performance street luminaire

- ✓ High performance LED street luminaire
- ✓ IP66 and IK 09 housing, maximum power and tempered transparent glass
- ✓ Quick and easy installation
- ✓ -20°C / 40°C ambient operating temperature
- ✓ High energy savings
- ✓ DALI option
- ✓ Driver and LED intervention parts separated from each other

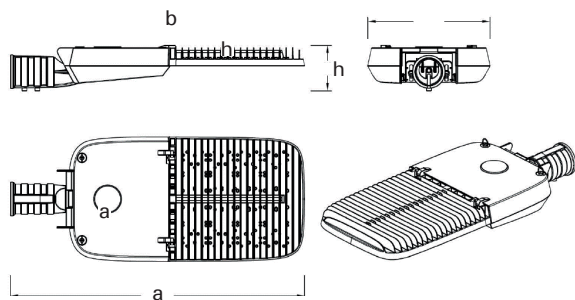


OSIRIS

250W – 374W
30430lm - 48352lm

Mid Power LED
100°

Technical Drawing



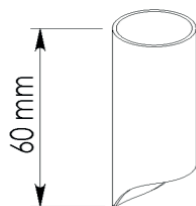
Dimensions (mm)

	a	b	h
Horus 1	601	423	120
Horus 2	721	313	120

Weight (kg)

	kg
Standard	10,5

Tube Installation



ARKTOS

NG



- Street and Environment
- Ports
- Highways
- Shipyards
- Open Spaces
- Urban Areas

-40°C +50°C



Perimeter lighting with excellent performance

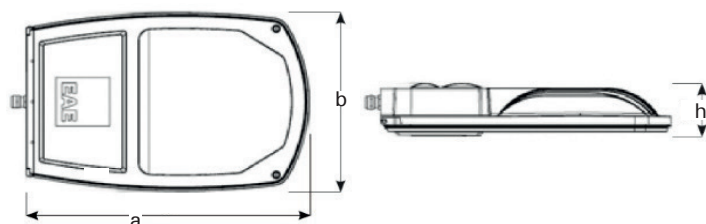
- ✓ Streetlight LED luminaire
- ✓ Aluminium injection monobloc housing
- ✓ IK08 mechanical strength and over a year's service life with vibration and impact resistant tempered transparent glass.
- ✓ 60,000 hours, ideal for streets, alleys, environments, security and outdoor parking lot lighting
- ✓ Maximum performance in wet and dusty IP66 environments
- ✓ High energy saving and long lasting use
- ✓ Perfect solution for the harshest winter and summer conditions with an operating ambient temperature of -40°C/+50°C
- ✓ Environmentally friendly lighting with zero mercury



ARKTOS

80W - 95W - 140W
9936lm - 15656lm
125lm/W

Technical Drawing



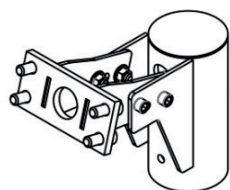
Dimensions (mm)

	a	b	h
Standard	475	330	92,5

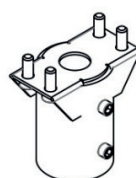
Weight (kg)

	kg
Standard	6

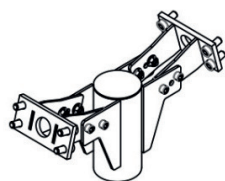
Vertical Single Mast Mounting Set



Horizontal Single Mast Mounting Set



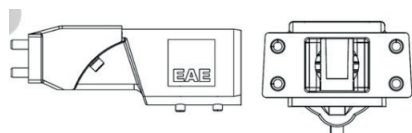
Vertical Bidirectional Mounting Apparatus



Wall Mounting Set



Horizontal - Vertical Hanger Set



INFINO

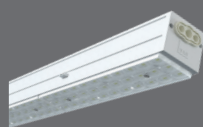
-20°C +55°C



- Logistics
- Data centres
- Textile
- Retail and Presentation
- Office and Communication
- Education and Science
- Art & Culturer

Endless applications for the perfect lighting experience

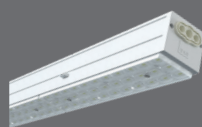
- ✓ LED linear duct system: Energy transmission, lighting control and more - all in one solution.
- ✓ Efficiency up to 190 lm/W
- ✓ Simple, fast and tool-free installation
- ✓ 30° / 60° / 90° / Asymmetric / Double Asymmetric / 25°x105° / 30°x90° different optical beam angles.
- ✓ Opal Diffuser / Microprismatic Diffuser
- ✓ UGR < 19 option



INFINO IP20

24W – 233W
4660lm - 35000lm

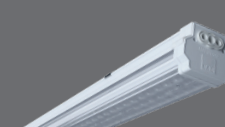
30°x90° / 30° / 60° / 90° /
25°x105° / Opal Diffuser /
Microprismatic Diffuser /
Asymmetrical
/ Double Asymmetric



INFINO IP40

24W – 233W
4660lm - 35000lm

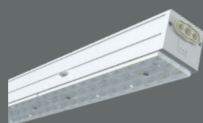
30°x90° / 30° / 60° / 90° /
25°x105° / Opal Diffuser /
Microprismatic Diffuser /
Asymmetrical
/ Double Asymmetric



INFINO MULTILENS IP64

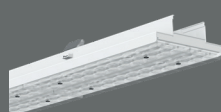
24W – 185W
4460lm - 25500lm

30°x90° / 30° / 60° / 90° /
25°x105° / Asymmetric
/ Double Asymmetric



INFINO MULTILENS

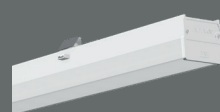
Tracking unit channel duct for
INFINOLINE



INFINO MULTILENS DUO

Double LED unit suitable for
INIFINOLINE channel duct

Up to 35K Lumens



INFINO OPAL

Single LED with suitable opal
diffuser
compatible with INFINOLONE
channel rail Unit



INFINO MIKROPRISMATİK

For office and training structure
suitable product
UGR < 19



INFINO TRACK

Tracking unit channel duct for
INFINOLINE



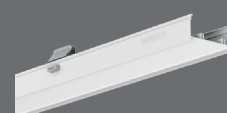
INFINO SENSOR

Sensor unit
compatible with INIFINOLINE
channel duct



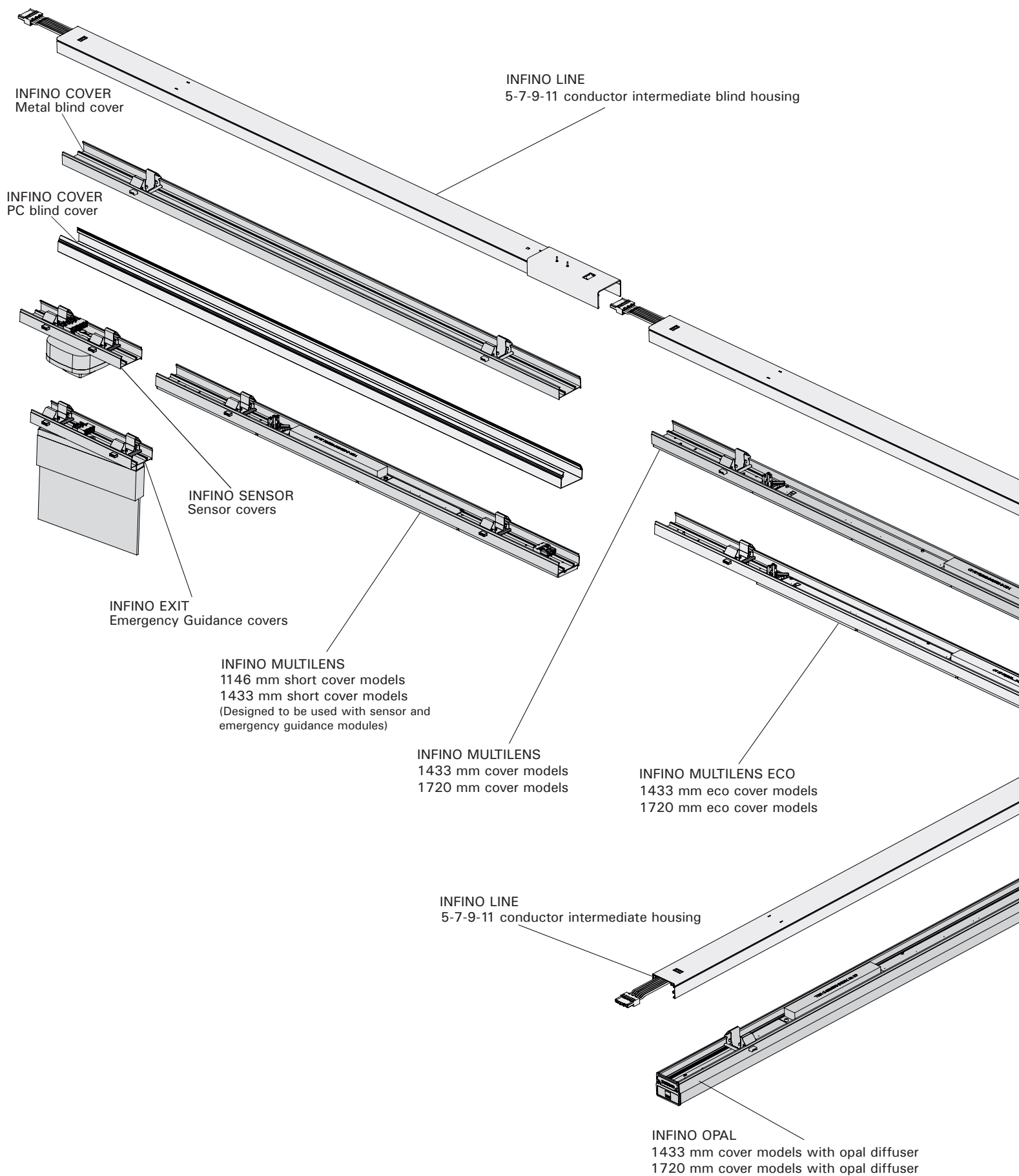
INFINO EXIT

Emergency guidance unit
Suitable for INFINOLINE
channel duct

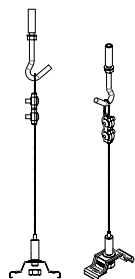


INFINO COVER

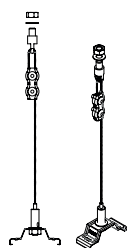
Compatible with
metal or PC covers
INFINOLINE channel duct.



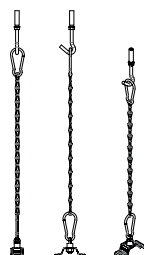
Support Kits



STEEL FIBRE-REIN-
FORCED CONCRETE
SUSPENSION SET



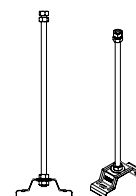
STEEL FIBRE-CABLE
TRAY SUSPENSION SET



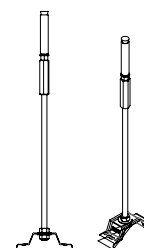
CHAIN CONCRETE
SUSPENSION SET



CHAIN CONCRETE CABLE
TRAY SUSPENSION SET



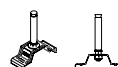
ROD-WIRE CABLE TRAY
SUSPENSION SET



ROD-CONCRETE
SUSPENSION SET



SUPPORT SPRING CABLE
TRAY INSTALLATION TOOL



SUPPORT SPRING CONCRETE
INSTALLATION TOOL

INFINO LINE
5-7-9-11 conductive
intermediate body

INFINO RAY
Three-phase track 1433mm cover models
Three-phase track 1720mm cover models

INFINO LINE
Starter housing (internal energy supply)

X turning

T turning

L turning

INFINO MULTILENS DOUBLE
2* 1433mm cover models
2* 1720mm cover models

M-LINE

-20°C +40°C



- Logistics
- Education and Science
- Complex
- Shops and markets
- Office and Administrative Buildings

Cost-effective alternative for endless lighting applications

- ✓ High performance surface-mounted modular lighting LED luminaire
- ✓ Various housing sizes available
- ✓ 40° / 60° / 90° / Double asymmetric / swivel beam angle
- ✓ Maintenance free, long life, easy installation
- ✓ 1 - 3 hour EMG kit / DALI control options

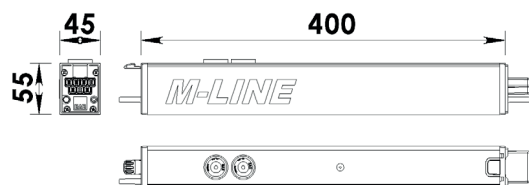


M-LINE

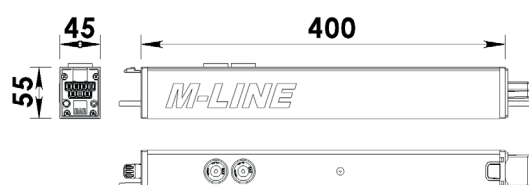
11W / 124W
1666lm - 13624lm

40° / 60° / 90° /
Double asymmetric / Batvving

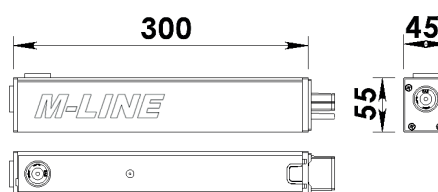
Technical Drawing



Central Feeder Box Module



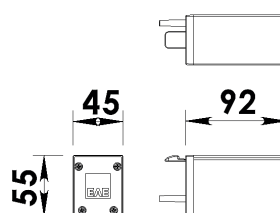
Bastan Feed Module



Intermediate Module



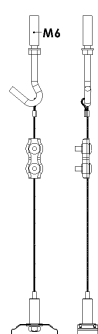
End Closer Module



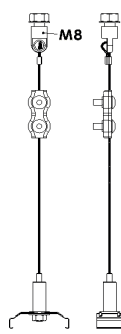
Weight (kg)

	kg
Single Module	1,56
Blank Module	1,15
Intermediate Module	1,76
Center Feed Module	0,46
Feeder Module	0,35
Termination Module	0,1

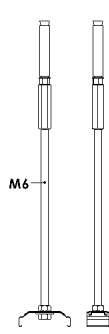
Support Kits



STEEL WIRE-CONCRETE
SUSPENSION SET



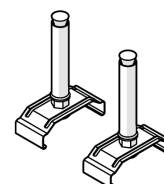
STEEL TRAY
SUSPENSION SET



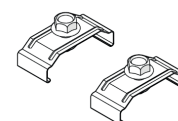
TIJI
SUSPENSION SET



TIJI-CONCRETE
SUSPENSION SET



CONCRETE
SUSPENSION SET



TRAY
SUSPENSION SET

GALIS MEGA

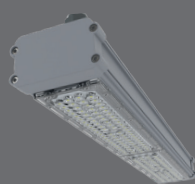
-25°C +40°C



- Logistic Plants
- Education and Science Buildings
- Mixed Buildings
- Shops and Markets
- Office and Administrative Buildings

Uninterrupted lighting

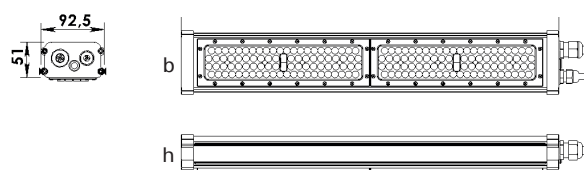
- ✓ High performance etange LED lighting fixture
- ✓ Maximum energy saving
- ✓ IP65 & IK08 aluminium housing & tempered glass
- ✓ 11070lm-10998lm light output range / 73W power consumption
- ✓ Flexible mounting with movable mounting spring
- ✓ Quick and easy electrical connection with cable gland
- ✓ DALI control / 1 H-3H EMG / Uninterruptible supply options



GALIS Mega

32W / 54W / 77W / 90W
4789lm / 8374lm / 11370lm
13130lm

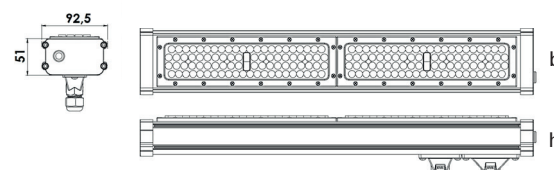
Technical Drawing (Sleeve Product)



Dimensions (mm)

	a	b	h
Standart	550	92,5	51

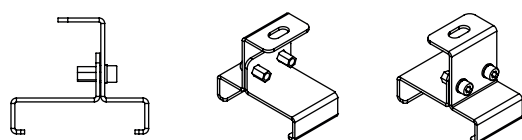
Technical Drawing (Slideway Product)



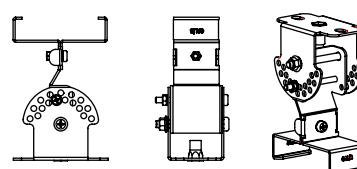
Weight (kg)

	kg
Standart	1,7
Standart ACK	2
DALI + ACK	2

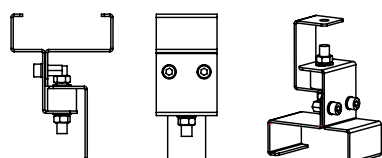
Fixed Hanger Set



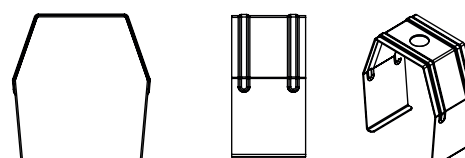
Graded Hanger Set



Fixed Support Mounting Kit



Long Support Spring



GALIS

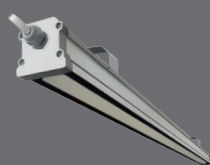
-25°C +40°C



- Logistics
- Education and Science
- Complexes
- Shops and Markets
- Office and Administrative Buildings

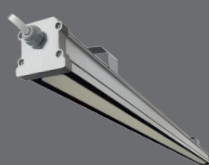
Maximum performance for extreme conditions

- ✓ High performance waterproof LED luminaire
- ✓ IP66 & IK07 aluminium housing & Tempered glass
- ✓ 2432lm-9547lm output range / 1 9W-68W power consumption range
- ✓ Standard / mini body options
- ✓ Flexible mounting with movable mounting spring
- ✓ Quick and easy electrical connection
- ✓ Can be used in car wash facilities with IP69.



GALIS Transparent Glass

19W / 68W
2432lm - 9547lm



GALIS Kumlu Cam

19W / 68W
1980lm - 7451lm

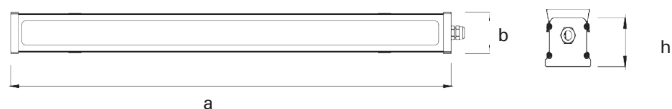


GALIS Mini

10W / 36W
1100lm - 3400lm
(Clear Glass)

14W / 36W
1603lm - 3924lm
(Sandy Glass)

Technical Drawing



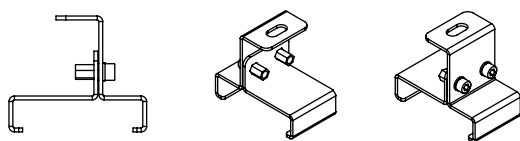
Dimensions (mm)

	a	b	h
Standard	526	76	70,5
	845	76	70,5
	1246	76	70,5
	1489	76	70,5

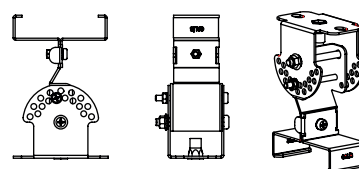
Weight (kg)

	kg
Standard	1,75
	2,7
	3,4
	4,3

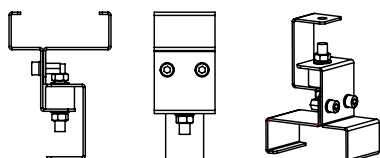
Fixed Hanger Set



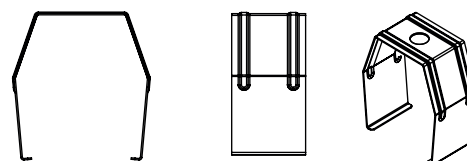
Graded Hanger Set



Fixed Support Mounting Kit



Long Support Spring



YPB BATWING

-20°C +45°C



- Logistics
- Data Centres
- Textile
- Retail and Presentation
- Office and Communication
- Education and Science
- Art & Culture

Solution-oriented, High efficiency lighting

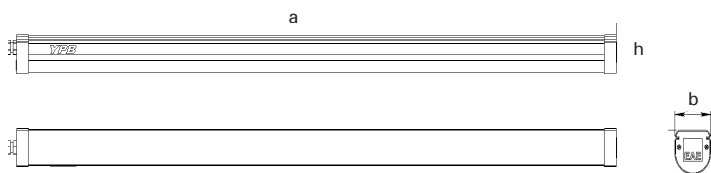
- ✓ Extruded plastic housing
- ✓ IP65 & IK09 aluminium housing & opal PC diffuser
- ✓ Optimised lighting for bi-directional illumination
- ✓ DALI control/1 H-3H EMG/continuous supply options
- ✓ Wide lumen and wattage range from 24W to 33W and 34klm to 45klm
- ✓ -20°C/ +45°C ambient operating temperature
- ✓ Easy to install and maintain design with advanced features



YPB

24W - 34W - 44W
3385lm - 4728lm - 6072lm

Technical Drawing



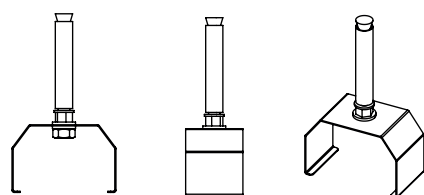
Dimensions (mm)

	a	b	h
Standard	915	57	57
	1195	57	57
	1475	57	57

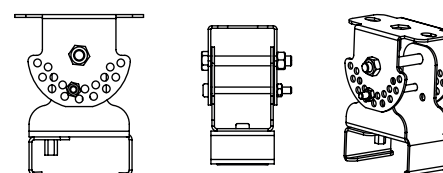
Weight (kg)

	kg
Standard	1
	1,3
	1,6

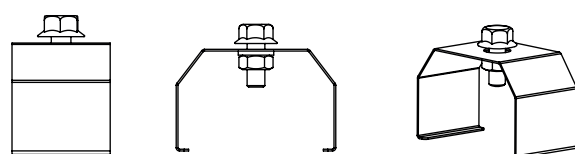
Fixed Hanger Set



Double Concrete Support Mounting Set



Graded Support Mounting Set



LINA ETANJ

-20°C +40°C



Economic lighting solution

- ✓ IP65 and IK09 aluminium and high impact resistant opal PC diffuser
- ✓ 1000lm - 8300lm output range
- ✓ 1 H-3H EMG kit / DALI control / Sensor / Pass-through wiring options

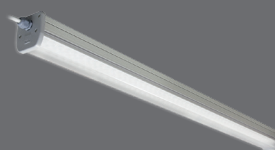
- Logistics
- Machinery and Electronics
- Data Centres
- Technical Rooms
- Canopy Installations
- Multi-storey Car Parks
- Cold Air Storages



LINA ETANJ V.4

10W – 62W
1000lm - 8300lm

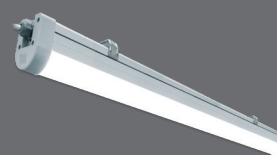
Wide Angle
Cabling Option



LINA ETANJ LENS

34W – 54W
4673lm - 7661lm

60° / 90°
Cabling Option



LINA ETANJ MINI

10W – 38W
1038lm - 4448lm

Wide Angle
Cabling Option

Technical Drawing



Dimensions (mm)

	a	b	h
ST Connector	373	65	83
	600	65	83
	920	65	83
	1320	65	83
	1600	65	83

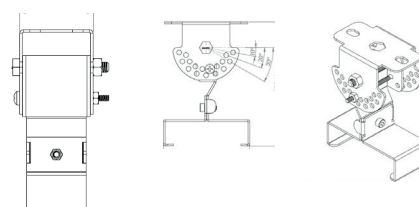
Fixed Hanger Set



Dimensions (mm)

	a	b	h
MR Connector	318	65	83
	545	65	83
	865	65	83
	1265	65	83
	1600	65	83

Graded Hanger Set





- Logistics
- Machinery and Electronics
- Data Centres
- Technical Rooms
- Canopy Installations
- Multi-storey Car Parks
- Cold Air Storages

Easy installation and connection with custom design

- ✓ High performance LED luminaire
- ✓ Aluminum extrusion body IP66 & Dazzling controlled opal diffuser
- ✓ Easy installation and connection opportunity with special design
- ✓ 60° / 90° / 110° / Batwing option
- ✓ Through-wiring sistem
- ✓ 1H-3H EMG kit / DALI control option



LINA
NG

25W – 84W
2800lm - 8900lm

60° / 90° / 110°

Cabling Option

Technical Drawing



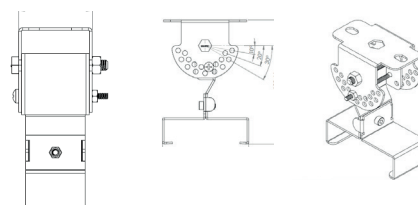
Dimensions (mm)

a	b	h
1200	84,7	69,7
1500	84,8	69,7

Fixed Hanger Set

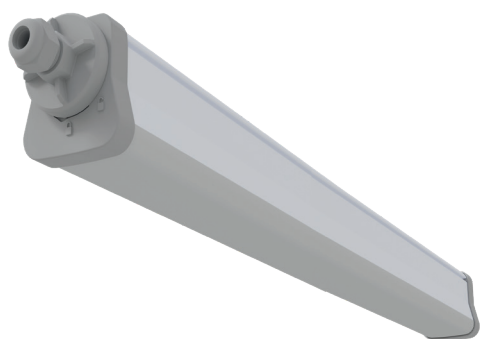


Graded Hanger Set



COZAR

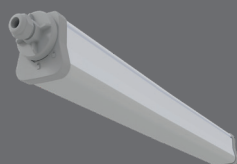
-20°C +40°C



Economical lighting solution for damp areas

- ✓ IP65 / IP66 & IK09 plastic extrusion housing
- ✓ 2079lm-8347lm output range/1 9W-75W power consumption range
- ✓ -20°C / 40°C ambient operating temperature
- ✓ 1-3 hours EMG / DALI control / Pass-through wiring options

- Industrial plants
- Aviation and airports
- Mixed Buildings
- Ports & Shipyards
- Logistics
- Metro & Rail Systems
- Sports Halls



COZAR

19W – 75W
2079lm - 8347lm

Wide Angle
Cabling Option



COZAR IP66

19W – 75W
2079lm - 8347lm

Wide Angle
Cabling Option

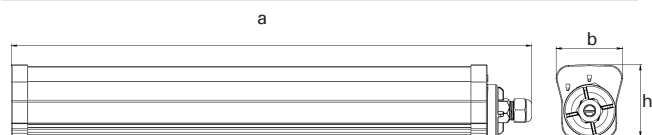


COZAR BPL

19W – 75W
2079lm - 8347lm

Wide Angle
Cabling Option

Technical Drawing



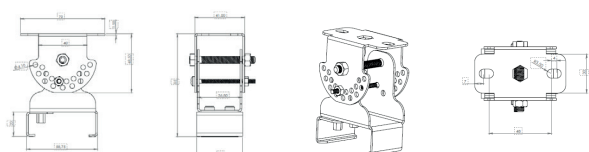
Dimensions (mm)

a	b	h
545	69	75
865	69	75
1265	69	75
1505	69	75

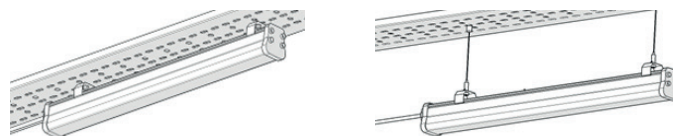
Weight (kg)

	kg
545	1
865	1,5
1265	1,9
1505	2,2

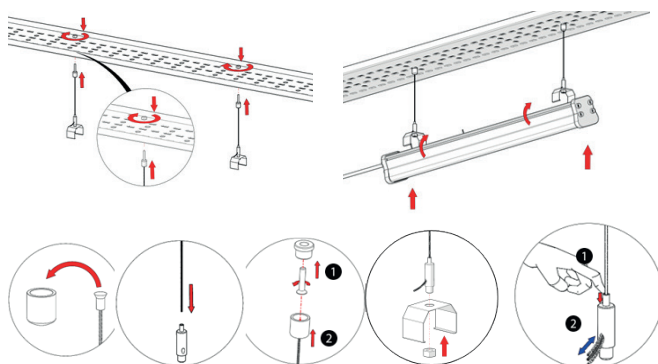
Graded and Stainless Hanger Set



Surface Mounting



Surface Mounted Pendant Mounting



TORNADO

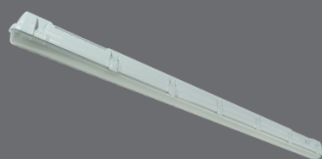
-25°C +50°C



Moisture resistant, economical and efficient luminaire

- ✓ Surface mounted water resistant LED luminaire
- ✓ IP66 & IK10 resistant transparent polycarbonate body and diffuser
- ✓ Different lumen packages, size options
- ✓ -25°C / 50°C ambient operating temperature
- ✓ 1-3 hours EMG / DALI control

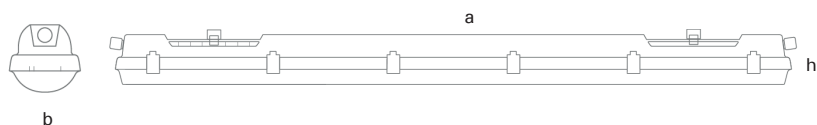
- Parking Lots
- Logistics
- Industrial Plants



TORNADO

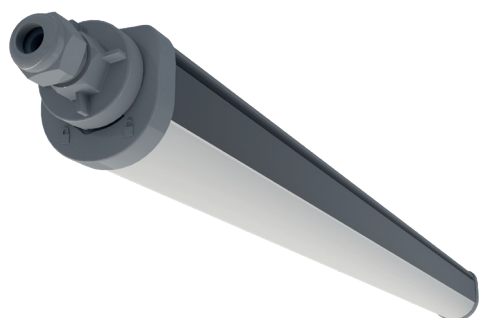
40W – 80W
5000lm - 10417lm
Wide Angle

Technical Drawing



Dimensions (mm)

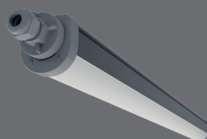
a	b	h	d
1175	98	84	700-960
1455	98	84	970-1230



- Parking Lot
- Logistics
- Industrial Areas

Great performance output

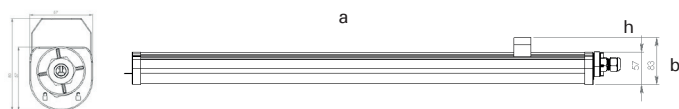
- ✓ IP65 & IK10 Plastic Extrusion body & Opal diffuser
- ✓ Efficiency up to 101.6lm/W
- ✓ 3000lm, 4300lm, 6100lm options
- ✓ Up to 72,000 hours long lifetime
- ✓ 4000K / 6500K colour temperature options
- ✓ 30W - 53W power consumption range
- ✓ DALI control / 1 H-3H EMG / Uninterruptible supply options



YPL
NG

30W – 53W
3000lm - 6000lm

Technical Drawing



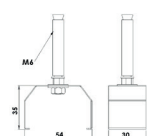
Dimensions (mm)

a	b	h
853	57	57
1255	57	57
1500	57	57

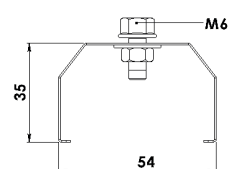
Weight (kg)

	kg
853	0,9
1255	1
1500	1,3

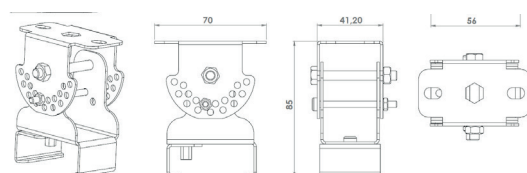
Wall Hanger Set



Tray Hanger Set

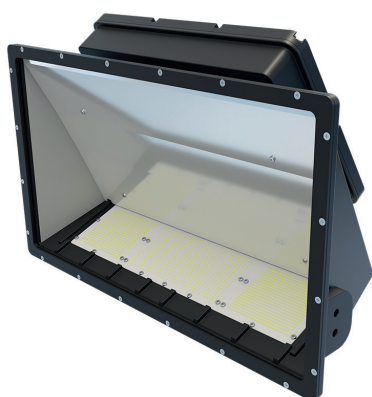


Graded Hanger Set



GPRONA

-30°C +55°C



- Shipyard
- Ports
- Ship and Shipbuilding
- Aircraft Hangars
- Passenger Ship Facades

The Best Choice of Asymmetric Viewpoint

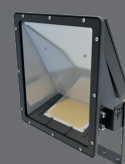
- ✓ LED luminaire, which is suitable for heavy industrial and port conditions
- ✓ IP66/ IK09 high mechanical strength and resistant to harsh conditions with tempered glass
- ✓ Perfect solution in the port sites with special asymmetric curve
- ✓ 135W-463W and a wide lumen and power range from 21444lm to 74200lm
- ✓ Versatile control and automation with DALI, RF and 1-10V options
- ✓ Perfect 1:1 replacement for 1000VV metal halide lamps
- ✓ Suitable for special site solutions for special projects
- ✓ High strength against vibrations.



GPRONA

136W / 159W / 290W / 364W / 463W
21000 lm / 24000lm / 46000 lm /
57000lm / 74000 lm

DALI / 1-10V / DIMKO / RF option

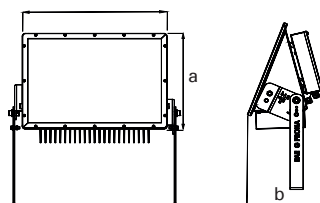


GPRONA MINI

133W / 156W / 185W
21800 lm / 25400 lm / 29400 lm

DALI / 1-10V / DIMKO / RF option

Technical Drawing



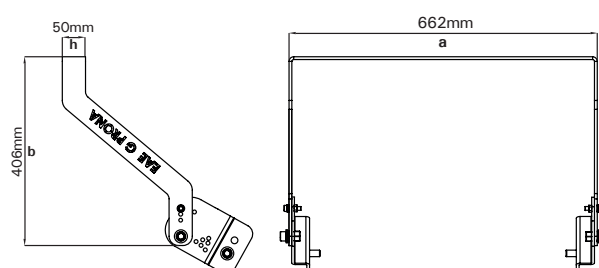
Dimensions (mm)

a	b	h
446	589	617
508	589	296
529	589	617

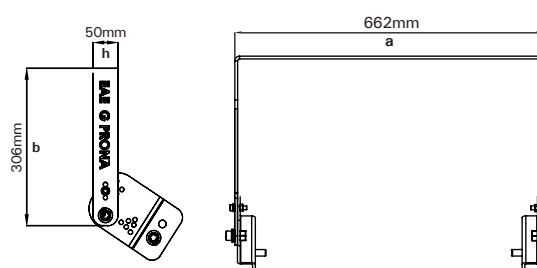
Weight (kg)

22
30,5
31,5

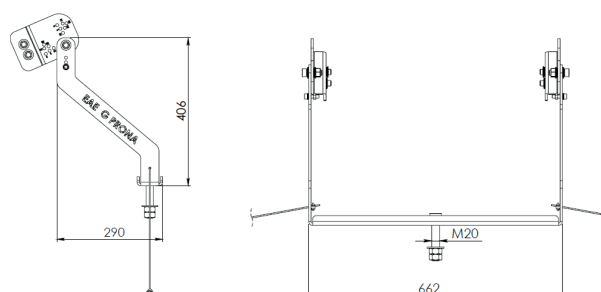
Suspended Hanger Set



Short Hanger Set

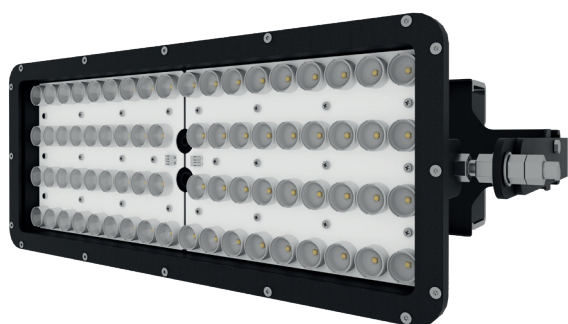


Easy Assembly Hanger Set



SPRONA

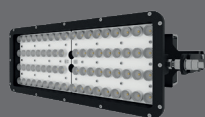
-25 °C +45 °C



- Shipyard
- Ports
- Ship and Shipbuilding
- Aircraft Hangars
- Passenger Ship Facades

Maximum performance for extreme conditions

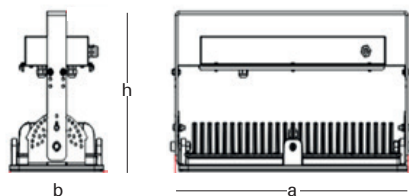
- ✓ Aluminium housing with high mechanical strength
- ✓ Maximum performance in the environments, where water and dust are available, with its IP66 Value
- ✓ Optimized, single, dual and triple modular use
- ✓ Functional use in the port and outdoor applications with special Hanger Set
- ✓ Long-lasting use with its life cycle exceeding 60,500 hours
- ✓ -25 °C / + 45 °C operating ambient temperature



SPR
CRANE

348W
144lm/w
20° / 35° / 60°

Technical Drawing



Dimensions (mm)

	a	b	h
Single Model	605	249	220
Dual Model	605	615	220
Triple Model	605	980	220

Weight (kg)

Single Model	15,4
Dual Model	41
Triple Model	65

Single and Double Hanger Set



Single and Double Hanger Set



Triple Hanger Set



Triple Hanger Set



AGILITY

-20°C +40°C



- Shipyard
- Ports
- Ship and Shipbuilding
- Aircraft Hangars
- Passenger Ship Facades

One step ahead in lighting

- ✓ IP66 Maximum performance in harsh environments such as water and dust with its aluminium injection housing.
- ✓ Economic and optimum lighting in outdoor applications.
- ✓ Suitable for football fields, tennis courts, car parks etc.
- ✓ Single, double and triple use alternatives suitable for stadiums
- ✓ Easy installation and maintenance at project sites

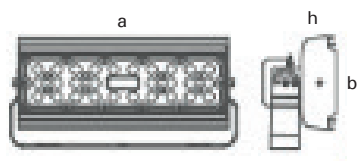


AGILITY

130W / 257W / 385W

15400lm

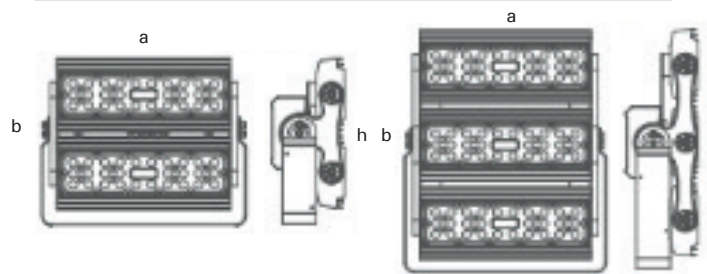
Technical Drawing (Single)



Dimensions (mm)

	a	b	h
Single Model	298	145	94
Dual Model	326	277	118
Triple Model	326	402	118

Technical Drawing (Double and triple)



Weight (kg)

2,8
4,5
6,7

ALPHA



■ Stadium

-25°C +30°C



Push the limits, leave the lighting to Alpha

- ✓ IP66 Protection against water splash, dust and other external factors with aluminium injection housing
- ✓ Single, double and triple use option
- ✓ Ideal lighting with optimized technical features.
- ✓ High efficiency value and advanced optical design
- ✓ 20°C - +60°C operating ambient temperature
- ✓ Long service life and maintenance-free LED technology

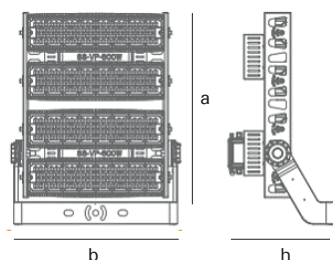


ALPHA

1113W / 1180W / 1392W / 1475W

113004lm / 118310lm / 141256lm /
147888lm

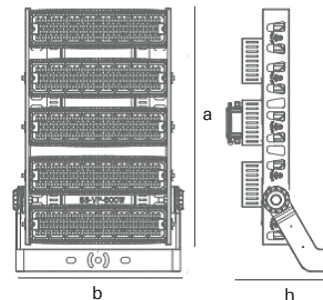
Technical Drawing



Dimensions (mm)

	a	b	h
Quad Model	812	649	404
Quintet Model	993	649	508

Technical Drawing



Weight (kg)

15,4
41
65

KANOLED

-20°C +50°C



LED Luminaire for Fuel Stations

- ✓ Excellent performance for flammable and combustible areas
- ✓ High mechanical strength with IP66 & IK07 robust body structure
- ✓ Minimum energy use for basic lighting needs
- ✓ -20°C / + 50°C operating ambient temperature
- ✓ Long service life up to 60,000 hours



KANOLED V.3 IP65

60W – 100W
9700lm - 14415lm

Tempered Glass - Tulle Glass

Wide Angle / 115°

Wiring Option



KANOLED V.3

46W – 133W
6600lm - 13000lm

Sandy Glass

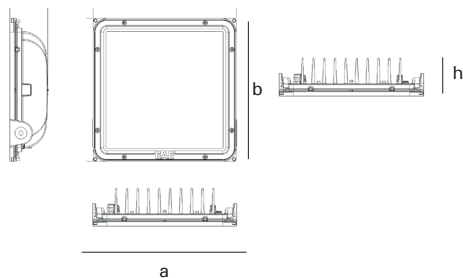


KANOLED V.3 HE

46W – 100W
6900lm - 15310lm

Transparent Glass

Technical Drawing



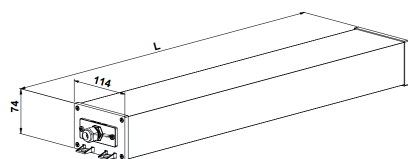
Dimensions (mm)

a	b	h
336	336	89

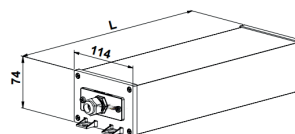
Weight (kg)

5

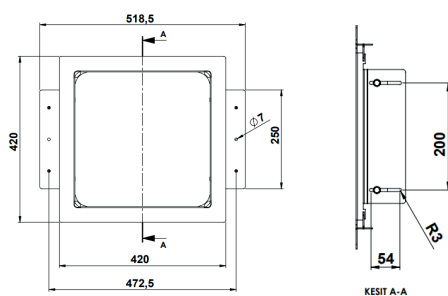
External ACK Box Standard



External ACK Box DALI



U Hanger Set



DIMKO

Meet **Sustainable** Energy Saving!

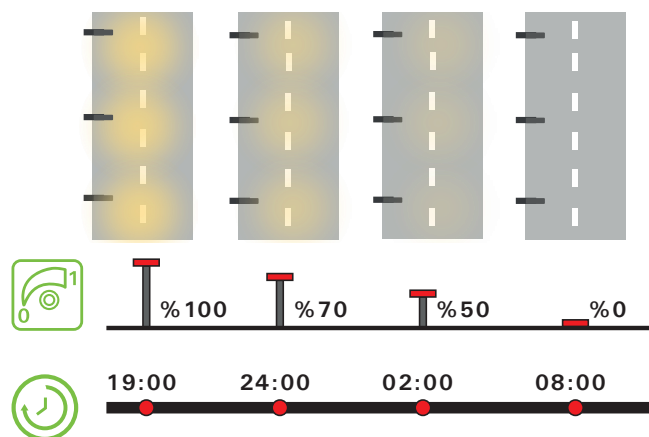
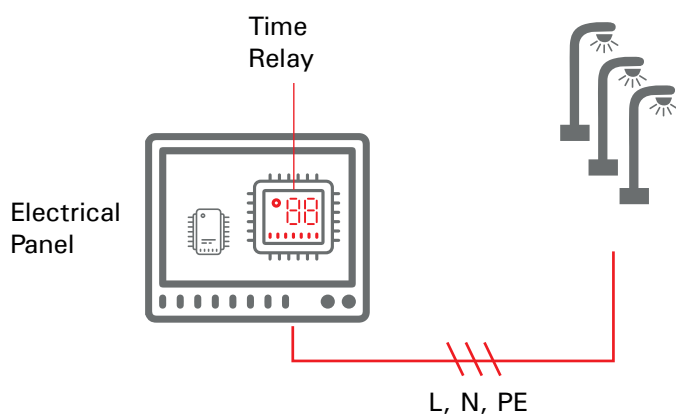


Dimko is used as a signal generator in light control devices, dimmer/increase control of time relays. The module is an EAE Lighting control solution that allows the user to adjust the time and lighting level.



DIMKO SCENARIO

System opening and closing hours can be set with 7 different scenarios according to summer and winter months.



Products compatible with **DIMKO**

RA

RA 2

RA 3

ARKTOS

DIMKO



Quick, easy and affordable...

%81

Energy savings up to **81%**.



No maintenance costs.



Dimming system that does not harm the ecosystem.



%55
ABOVE

Savings of more than **55%** on lighting expenses.



Advantageous installation

Installation without expensive duct excavations.



Efficient time management.

It can be programmed within 40 seconds.



Possibility of use with existing infrastructure

No need to replace existing luminaires and poles.



Simple control

Provides control without the need for a team of experts.



PROLIT



PROLIT PLUS



**PROLIT KOMPAKT
V.3**



**PROLIT-M PRM
V.2**

DL BUSBAR

E-Line DL Straight Length Busbar Systems are used in building installations with an energy requirement of 25-40A. They are designed to supply lighting and socket circuits with 16A output plugs and 25A output sockets.

EAE Busbar Systems are produced using the world's latest manufacturing technologies, in accordance with ISO 9001 Standards and with a certified Quality Assurance System. Units are designed and tested according to IEC 61439-6.



OUTPUT CONTROLS

The output connectors of the DL busbar systems are designed with different contact sequences to prevent incorrect operation of the busbar. All plugs are manufactured so that they can only be plugged into the busbar in one direction. This prevents incorrect use of the phases.

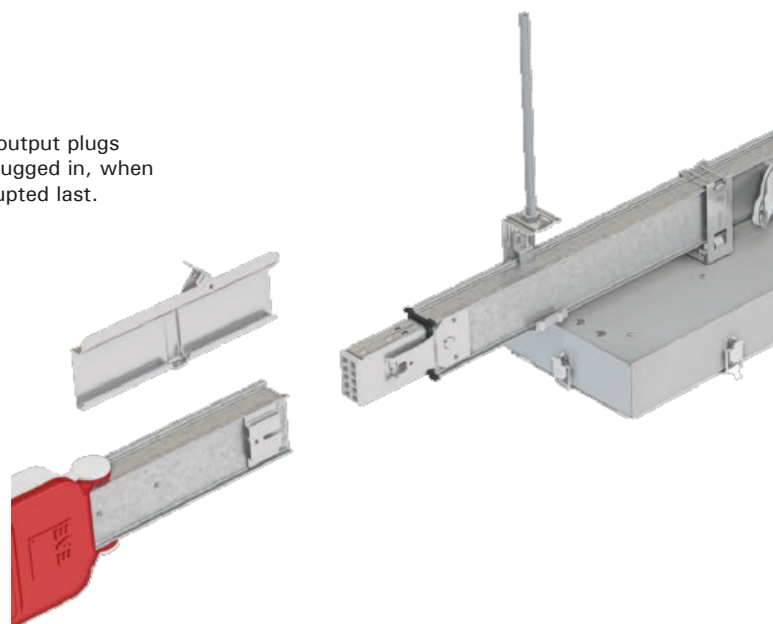


COLOURED COVERS TO INDICATE THE PHASE

The output plug covers have different coloured phase indicators so you can easily see which phase the luminaire is powered in.

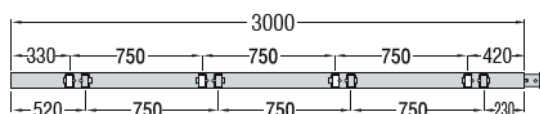
SAFETY

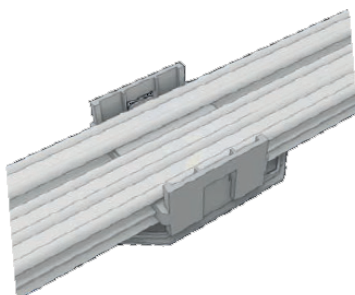
The protective contacts of the output plugs come into contact first when plugged in, when unplugged the contact is interrupted last.



8 CURRENT PICK-UP WINDOWS IN 3 M STANDARD LENGTH

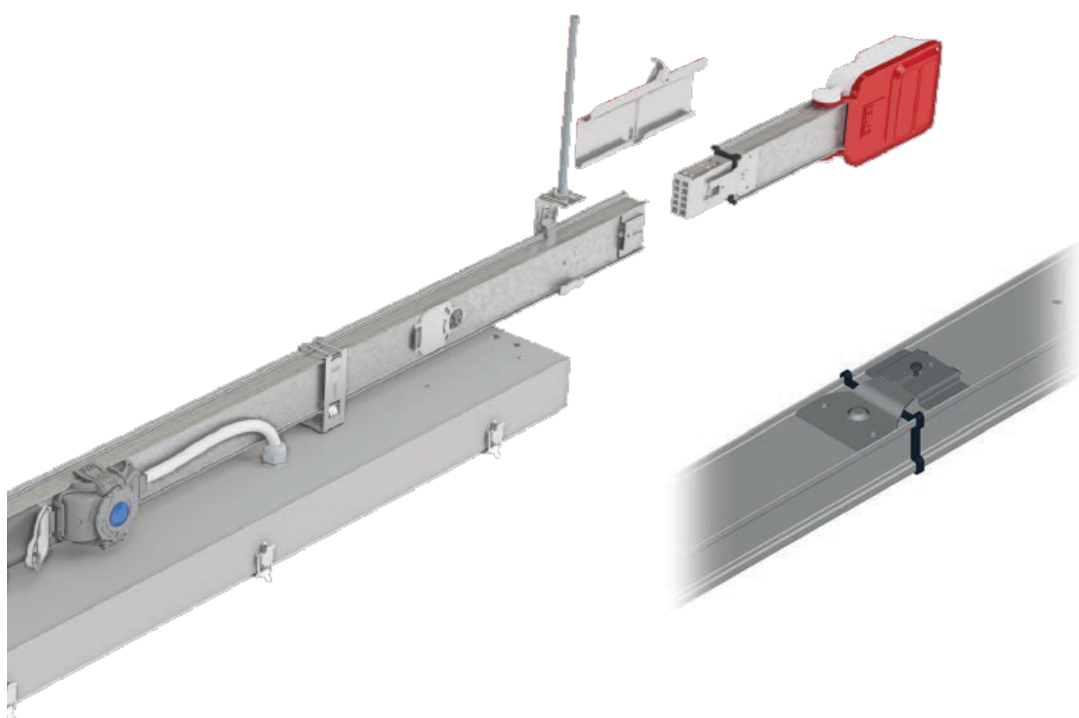
The possibility of receiving current from 8 points on both sides of the busbar is offered as standard.





FULL ISOLATION

Busbar conductors are coated with full-length flame-proof insulation material. Even if the body-work is damaged by heavy impacts from outside, people's safety is fully guaranteed.



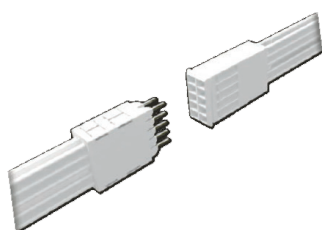
QUICK, EASY AND SAFE INSTALLATION

Copper conductors are plated with tin in full-length, preventing the formation of Copper Oxide. This minimises the contact resistance. The contacts of the output plugs clamp the conductor in the busbar on two surfaces.



TINNED CONDUCTORS AND CONTACT STRUCTURE

Copper conductors are plated with tin in full-length, preventing the formation of Copper Oxide. This minimises the contact resistance. The contacts of the output plugs clamp the conductor in the busbar on two surfaces.



SILVER PLATED ADDITIONAL CONTACTS

The contacts at the busbar joints and the contacts of all tap-off units are silver-plated. The silver-plating minimises the contact impedances, thus preventing the over-heating of the contacts in case of possible over-loads. The contacts at the busbar joints and the contacts of all tap-off units are silver-plated. The silver-plating minimises the contact impedances, thus preventing the over-heating of the contacts in case of possible over-loads.



EAE Aydınlatma A.Ş.
İkitelli OSB Mah. Eski Turgut Özal Cad.
EAE No: 20, İç Kapı No: Giriş Kat
Başakşehir / İSTANBUL - TÜRKİYE
Tel : +90 212 413 21 00 (pbx)
Faks : +90 212 549 37 90
www.eaeaydinlatma.com

engineering the light

EAE LIGHTING-Brochure **ACQUETRIAL LIGHTING PRODUCT HIGHLIGHTS 2022 - EN** - Update Date: 09.09.2022
EAE, is provided with the right to perform the necessary without notifying in advance.
Please contact us for further information about products and details partaking in catalogue.